

TITAN™

ELECTRIC AIRLESS SPRAYERS



TITAN™

WHY TITAN ELECTRIC SPRAYERS?

Interior and exterior projects – from kitchen cabinets to the block siding of a factory – are profitable only if the work can be done faster than a simple brush and roller. For that you need the kind of power and reliability you have come to depend on from a Titan electric airless sprayer.

Backed by the most powerful warranty in the industry, our sprayers incorporate the durability and reliability you depend on to get interior and exterior projects done quickly and perfectly the first time. Whether your applications include a closet or a full-scale commercial jobsite, we have an electric airless sprayer designed and built for your needs.

ADVANCED PERFORMANCE

- Our electric airless sprayers, guns, and equipment are built for hard work and long life
- The latest engineering technology ensures ease of use and dependability
- Our electric airless sprayers meet and exceed the expectations of professionals who want to do the job right the FIRST time.

TOTAL RELIABILITY

- Proven technology - you finish every project quickly and profitably
- Superior design and construction maximizes the service life of your electric airless sprayers
- Complete diversity – we have the right equipment for every airless application
- Half a century of getting the job done right – TITAN is the name you trust

UNSURPASSED SERVICE

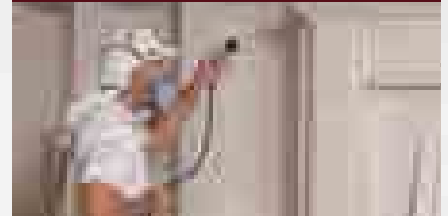
- Dependable, reliable network of authorized sales and service distributors
- The best customer service in the industry to help you select and maintain your electric airless sprayers, guns, and equipment
- Professional application and service representatives ready to assist you with recommendations and technical support

THE BEST & LONGEST WARRANTY IN THE INDUSTRY

When you purchase TITAN electric airless sprayers or equipment you purchase performance. We stand behind that assurance and are so confident in the quality of our equipment that we offer the best and longest warranty in the industry, including:

- 4-Year Manufacturer's Defects
- Lifetime Brushless Motor Warranty
- Limited Lifetime Motor Warranty
- Lifetime Drive Train Warranty
- 35-Day Satisfaction Guarantee
- Express Parts Program
- WearGuard™ Convenience Program

RESIDENTIAL INTERIOR



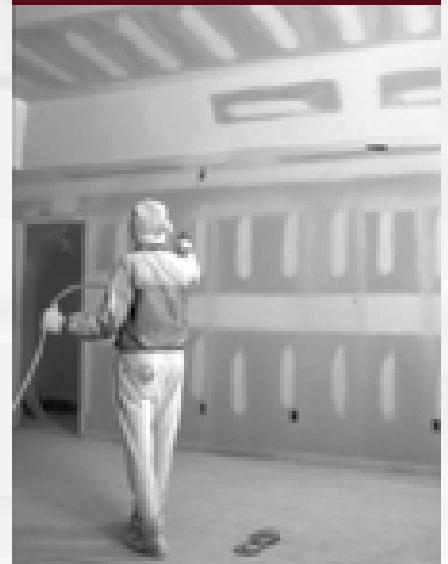
RESIDENTIAL EXTERIOR



COMMERCIAL EXTERIOR



COMMERCIAL INTERIOR



IMPACT™ SERIES

Maximize your investment with the IMPACT Series.

Business is demanding and you need the kind of performance you get from TITAN sprayers. It's time to invest in the expanded features and performance that will make a major IMPACT on your profit margin. Titan IMPACT airless paint sprayers offer the innovation and dependability a contractor needs to perform tough jobs.

Titan IMPACT Series Paint Sprayer

- Quad+ Packings – designed to wipe abrasive coatings clean during operation, preventing damage to the piston or the main sealing lip
- AutoOiler™ – with the push of a button you deliver oil from the reservoir directly to the packings
- Sureflo™ Pusher Valve lets you release a stuck lower ball valve without using a hammer (available on select units)
- DigiTrac™ Integrated Digital Display (available on select units)
- DuraLife™ brushless HE motor (available on select units)
- EZ Tilt™ cart allows for easy clean-up and faster pail changes (available on select units)
- EasyOut™ fluid section (available on select units)

These high-performance, light, medium, and heavy-duty electric airless paint sprayers are designed for sustained operation on a wide variety of projects, from a single room in a cottage to a warehouse or manufacturing facility. Recommended for serious contractors prepared to invest in long-term performance.

IMPACT™ 440

The IMPACT 440 is ideally suited for residential, property maintenance, and small commercial applications. This high performance electric airless sprayer will apply all standard architectural primers, paints, and coatings efficiently.

- The #1 selling sprayer in the industry is now even better with enhanced features and performance!
- Designed to consistently spray 50–100 gallons per week
- Ideal for applying stains, lacquers, enamels, latex, and other low and medium viscosity coatings

Recommended for small and medium residential and commercial projects.



IMPACT 440

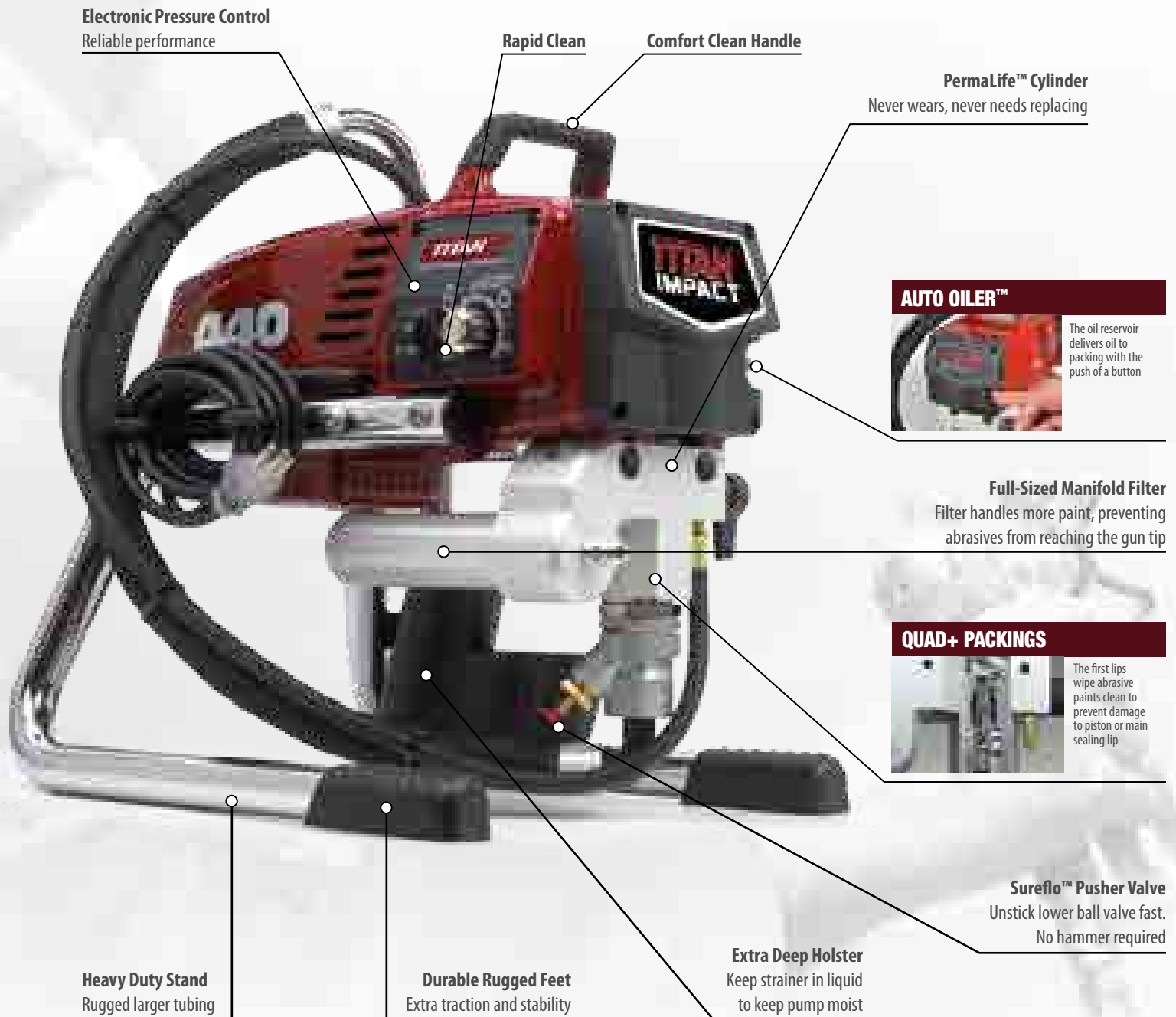
Max. Delivery	.54 GPM
Max. Tip Size	.023"
Max. Operating Pressure	3300 PSI
Weight (skid frame)	42 lbs.
(high rider)	69 lbs.
(low rider)	64 lbs.
Motor	7/8 HP DCX Motor

CONFIGURATIONS:

- Skid 805-000*
- High Rider 805-016*
- Low Rider 805-019*

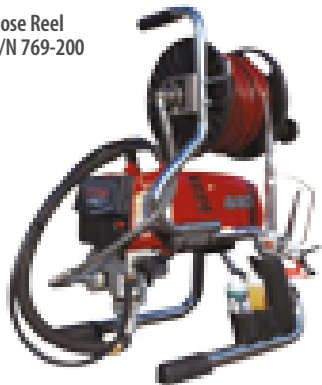
*Complete with LX-80[®] gun, 517 TR™ reversible tip and 1/4" x 50' airless hose.

THE #1 SELLING SPRAYER IN THE INDUSTRY



440 OPTIONAL HOSE REEL

Hose Reel
P/N 769-200



HOPPER

Hopper
P/N 704-453



SPECIFICATIONS



ADVANTAGE 400



IMPACT 440



IMPACT 540



IMPACT 640

	ADVANTAGE 400	IMPACT 440	IMPACT 540	IMPACT 640
Part Number - Skid	0552054	805-000	805-001	805-002
Part Number - High Rider	0552071	805-016	805-006	805-004
Part Number - Low Rider	----	805-019	805-003	805-005
Max Output (GPM)	.47	.54	.60	.70
Percent Output Increase Over Previous Model	----	14.9%	11.1%	16.7%
Max Tip Size 1-Gun	.021"	.023"	.024"	.027"
2-Guns	----	----	----	----
Max. Pressure (PSI)	3100	3300	3300	3300
Electric Motor (HP)	.75 DCX	.875 DCX	1.20 DuraLife Brushless HE	1.55 DuraLife Brushless HE
Max. Hose Length	300'	300'	300'	300'
Max. Cord Length	100'	200'	200'	200'
Power Cord Length - Skid	9'	9'	9'	9'
Power Cord Length - Cart	9'	9'	15'	15'
Tires - High Rider	10" Semi-Pneumatic	10" Semi-Pneumatic	10" Semi-Pneumatic	10" Semi-Pneumatic
Low Rider	----	8" Semi-Pneumatic	8" Semi-Pneumatic	8" Semi-Pneumatic
Weight - Skid (lbs)	38	42	42	42
Weight - Cart (lbs)	59	69	69	69
Gun Included	G-10 XL	LX-80	LX-80	LX-80
Reversible Tip Included	517	517	517	517
Airless Hose Included	1/4" x 50'	1/4" x 50'	1/4" x 50'	1/4" x 50'
Repair Kit - Pump	0551533	704-586	704-586	704-586
Manifold Filter - Pump	581-060	730-067	730-067	730-067
Repair Kit - Gun	0296204	580-034	580-034	580-034

THE CONTRACTOR CHOICE FOR ELECTRIC AIRLESS PAINT SPRAYERS



IMPACT 740



IMPACT 840



IMPACT 1040



IMPACT 1140



POWERTEX 1200SF

----	----	----	----	----
805-007	805-009	0552600	805-011	600-150
805-008	805-010	----	805-012	----
.80	1.00	1.15	1.20	1.20
14.3%	25.0%	15.0%	4.3%	----
.029"	.032"	.033"	.034"	.034"
.017"	.021"	.022"	.023"	.023"
3300	3300	3300	3300	3300
2.00 DuraLifeBrushless HE	2.30 DuraLife Brushless HE	2.50 HP DuraLife Brushless	2.60 DuraLife Brushless HE	2.4 HP Infinity Plus Brushless DC
300'	300'	300'	300'	300'
300'	300'	300'	300'	300'
----	----	----	----	----
15'	15'	15'	15'	15'
10" Semi-Pneumatic	12" Pneumatic	12" Pneumatic	12" Pneumatic	12" Pneumatic
10" Pneumatic	10" Pneumatic	----	10" Pneumatic	----
----	----	----	----	----
87	87	98	107	98
LX-80	LX-80	LX-80	LX-80	S-3 w/ Splatter Nozzle
517	517	517	517	427 & 531
1/4" x 50'	1/4" x 50'	1/4" x 50'	1/4" x 50'	3/8" x 50' & 1/4" x 50'
800-273	800-273	800-273	800-273	800-273
730-067	730-067	730-067	730-067	730-067
580-034	580-034	580-034	580-034	0502175



KEEP ON WORKING

A SPARE FLUID SECTION KEEPS YOU ON THE JOB

CONVENIENCE PROGRAM

Not only do we deliver high quality sprayers, we are proud to back them up with the best and longest warranty in the industry.

Titan sprayers are built to last. We are so confident that our sprayers will hold up to the most difficult jobs that we offer the best and longest warranty in the industry.

4 YEAR MANUFACTURER'S DEFECT

We pledge that our sprayers are free from defects in materials and workmanship. This excludes normal wear items and consumables such as filters, piston, packings, tips, etc.

LIFETIME DURALIFE BRUSHLESS HE AND PMDC BRUSHLESS MOTOR WARRANTY

If the motor fails for any reason (including wear) for as long as you own the sprayer, we will replace the motor at no cost to you.

LIMITED LIFETIME DCX MOTOR WARRANTY

If the motor fails from normal usage for as long as you own the sprayer, we will replace the motor at no cost to you.

GAS ENGINE WARRANTY

5 year Subaru®, 3 year Honda® and 2 years all others.

2 YEAR TURBINE WARRANTY

LIFETIME DRIVE TRAIN WARRANTY

If the drive train fails from normal usage for as long as you own the sprayer, we will replace the drive train at no cost to you.

35-DAY SATISFACTION GUARANTEE

If for any reason the sprayer does not perform up to your expectations within 35 days, the sprayer can be exchanged for the identical model or full credit towards the purchase of a Titan sprayer of larger size and value.

EXPRESS PARTS PROGRAM

- Over 900 Authorized Service Centers nationwide
- The most common repair parts are guaranteed to be in stock 100% of the time
- If for any reason your preferred Authorized Service Center is out of stock, free 2nd day air is available when ordered by 3:00 pm (EST)

WEARGUARD CONVENIENCE PROGRAM

Get up to 80% off a spare fluid section or choose to get a free repacking kit

Level 1	Impact™ 340, 400	\$10995* USD (\$131.94 CAD)
Level 2	Impact™ 440*, 540*, 640*, 740, 840, MF 440, GPX™ 85, PowrLiner™ 2850	\$22495* USD (\$269.94 CAD)
Level 3	Impact™ 1040, 1140, Advantage™ 1100, GPX™ 130	\$24995* USD (\$299.94 CAD)
Level 4	GPX™ 165, 220, PowrTwin™ 4900 Plus, 6900 Plus, 8900 Plus, 12000 Plus, PowrLiner™ 4955, 6955, 8955, 1200 SF	\$32495* USD (\$389.94 CAD)
Level 5	AirCoat™ 423, 620	\$39995* USD (\$479.94 CAD)
Level 6	PowrCoat™ 730, 745, 940, 960, 975, Hydra™ Pro IV	\$59995* USD (\$719.94 CAD)

* THE IMPACT™ 440, 540 & 640 CONVENIENCE PROGRAM FLUID SECTION COMES PACKED WITH FEATURES THAT THE COMPETITION CANNOT OFFER
INCLUDES \$375 IN ADDED FEATURES

Manifold Filter Housing | Pressure Transducer | SureFlo™ Pusher Valve | Prime Spray Valve

*Tax not included. Prices guaranteed through January 31, 2016.



Plug into TitanPowerHouse.com

Titan Tool

1770 Fernbrook Lane
Minneapolis, MN 55447
1-800-526-5362
Fax 1-800-528-4826

All information contained in this brochure is based on the latest information available at the time of printing. Titan reserves the right to make changes at any time, without notice.

Visit us on the web at: www.titantool.com
Call Tech Services at 1-800-526-5362 for complete warranty information.

Due to continuous innovation, specifications may progressively change. Contact one of our dependable sales reps or call our dedicated customer service team for more information.