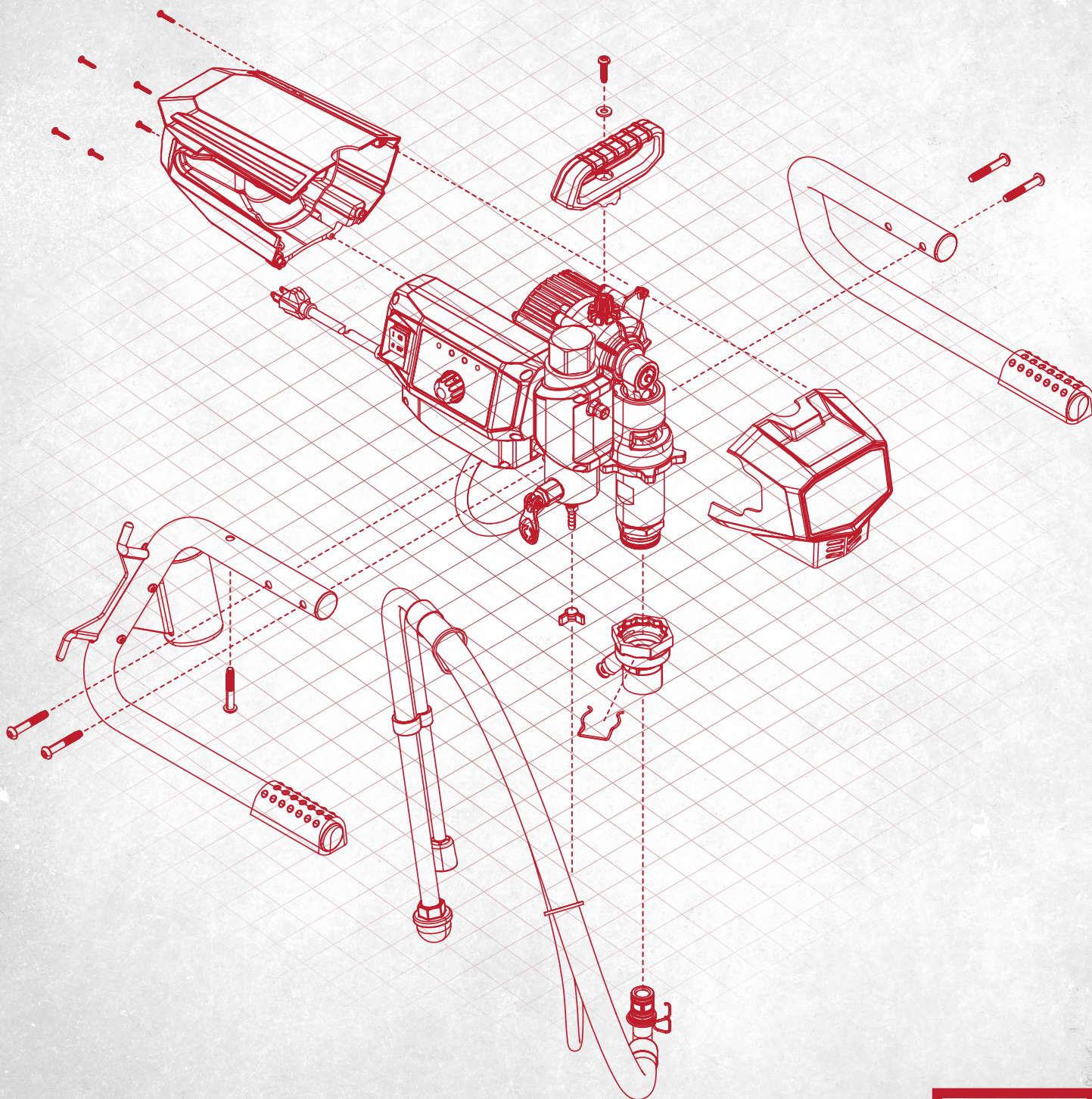




TITAN[®]

SERVICE CENTER GUIDE



SPRAYING **REDEFINED**

TITAN TECH SERVICE | 1-800-526-5362 | titantechservice@titantool.com



BEST & LONGEST WARRANTY IN THE INDUSTRY



NOT ONLY DO WE DELIVER HIGH QUALITY SPRAYERS, WE ARE PROUD TO BACK THEM UP WITH THE BEST AND LONGEST WARRANTY IN THE INDUSTRY.

4-YEAR MANUFACTURER'S DEFECT

We pledge that our sprayers are free from defects in materials and workmanship. This excludes normal wear items and consumables such as filters, piston, packings, spray tips, spray guns, hoses, etc.

LIFETIME DURALIFE™ BRUSHLESS MOTOR & PMDC MOTOR WARRANTY

If the motor fails from normal usage for as long as you own the sprayer, we will replace the motor at no cost to you.

LIMITED LIFETIME DCX MOTOR WARRANTY

If the motor fails from normal usage for as long as you own the sprayer, we will replace the motor at no cost to you.

GAS ENGINE WARRANTY

3-year Honda® and 2-years all others.

2-YEAR TURBINE WARRANTY

LIFETIME WARRANTY ON PERMASTROKE TECHNOLOGY™ FLUID PUMP

Get a lifetime warranty on the PermaStroke Technology fluid pump. If the fluid pump fails for any reason (including wear) for as long as you own the sprayer, we will replace the fluid pump at no cost.

AMPSHARE BY BOSCH® WARRANTY

Three-year limited warranty on batteries and 5-year limited warranty on battery chargers.

LIFETIME DRIVE TRAIN WARRANTY

If the drive train fails from normal usage for as long as you own the sprayer, we will replace the drive train at no cost to you.

35-DAY SATISFACTION GUARANTEE

If for any reason the sprayer does not perform up to your expectations within 35 days, the sprayer can be exchanged for the identical model or full credit toward the purchase of a Titan sprayer of larger size and value.

EXPRESS PARTS PROGRAM

- ◆ Over 500 Authorized Service Centers nationwide
- ◆ The most common repair parts are guaranteed to be in stock 100% of the time
- ◆ If for any reason your preferred Authorized Service Center is out of stock, free 2nd day air is available when ordered by 3:00 pm (ET)

WHAT DOES "LIFETIME" MEAN?

Products covered under our warranty program are fully warranted, to the original owner, for the practical lifetime of the product or as long as Titan stocks the replacement parts. This does not mean your lifetime, although we have often heard stories about our products being used well past thirty and forty years!

TABLE OF CONTENTS

Your Technical Service Team.....	3
Recommended Parts List.....	4
Recommended Tools.....	5
Stock Exchange Program.....	5
Warranty Allowance Chart.....	6
Bulk Buys.....	7
Express Parts Program	8-11
Terms & Conditions.....	11



YOUR TITAN TECHNICAL SERVICE TEAM

114 COMBINED YEARS

OF TECHNICAL, CUSTOMER & INDUSTRY EXPERIENCE

Please meet Titan Tech Service's team of professionals with an average of 19 years of experience

ANDREW ULLRICH
TECHNICAL SERVICE
MANAGER

DALE GOODMAN
SR. TECHNICAL SERVICE
REPRESENTATIVE

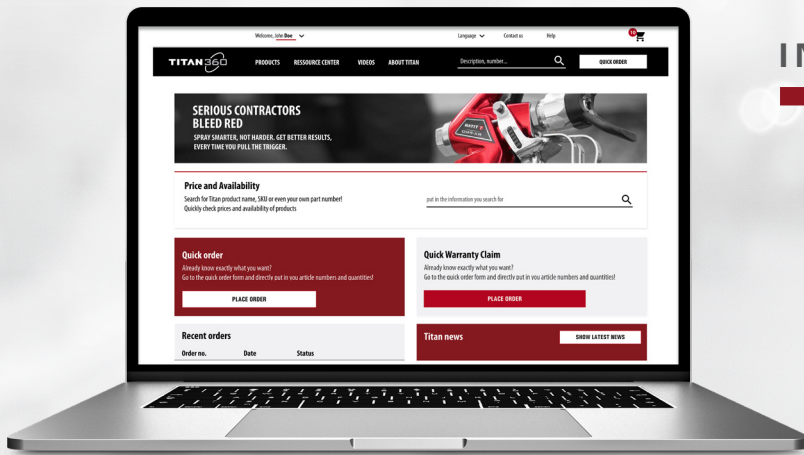
TOM TONNESSEN
SR. TECHNICAL SERVICE
REPRESENTATIVE

TROY MICHEAU
SR. TECHNICAL SERVICE
REPRESENTATIVE

JAMES BRANDT
TECHNICAL SERVICE
SPECIALIST

JEFF MASTRO
TECHNICAL SERVICE
REPRESENTATIVE

THE COMPLETE ORDERING TOOL



INTRODUCING **TITAN 360**

The NEW Titan 360 web shop gives you real-time access to key information, online ordering and resources.



Check Product Availability

Real-time access to sprayer, part and accessory availability and estimated ship dates.



Order History and Tracking

Access real-time order tracking and a multi-year order history.



Resources at your fingertips

Access resources like, brochures, parts lists, video and program details.



Price Check

Get accurate, up-to-date pricing for any Titan products.



Product Parts List

Access a comprehensive parts list on sprayer product pages.



Warranty Submission/Tracking

Submit warranty claims and track progress.



CONTACT CUSTOMER SERVICE TO GET SET-UP TODAY.

Have this information ready:

- Account Number and Admin email address you want to use to login.

titancustomerservice@titantool.com • 1-800-526-5362

RECOMMENDED SERVICE CENTER STOCKING PARTS

Valid for all Titan, SprayTech, Speeflo and Wagner units

Electric Piston Pumps

PACKING KITS	PART NO.
Impact 410, 440, 540, 640, 640I, 640IA; 440ix, 640ix; Impact X™ 410, 440, 540I	704-586B
Impact 740, 840, 840I, 840IA	805-1010
Impact 1040, 1140, 1140I, 1140IA	0558740

PRESSURE CONTROL	PART NO.
Impact 440	805-402A
Impact 540	805-837
Impact 640	805-838
Impact 740	805-839
Impact 640I, 640IA	2419746
Impact 840	805-840
Impact 840I, 840IA	2419750
Impact 1040	0552990
Impact 1140	805-841
Impact 1140I, 1140IA	2419754
Impact X 410	2452239
Impact X 440, 540I	2425490A

FUSE	PART NO.
Advantage 700, 1100; Impact 540, 640, 640I, 640IA, 740, 840, 840I, 840IA; Impact X 410, 440, 540I	800-929 (15A)
Impact 1040, 1140, 1140I, 1140IA	0522404

PISTON RODS	PART NO.
Impact 340, 400	0532204A
Impact 410, 440, 540, 640	704-551A
Impact 740, 840	805-437A
Impact 1040, 1140	805-456A
Impact X 410, 440, 540I	2420579A

MOTORS	PART NO.
Impact 440	0558373A
Impact X 410, 440, 540I	2425488A

MOTOR BRUSHES	PART NO.
Impact 410	0508645
Impact 340, 400, 440	805-272

PRIME/SPRAY VALVE	PART NO.
All Impact ix and i models	700-258
Impact X 410, 440, 540I	2440405
All Advantage, SprayTech EPX and Impact 410 Pumps	0507690

TRANSDUCER	PART NO.
Impact 440, 540, 640	704-492A
Impact 740, 840, 1040, 1140	800-437
Impact X 410, 440, 540I	2427607A

Electric Piston Pumps (cont.)

ON/OFF SWITCH	PART NO.
Advantage 400, 500, 600; All Impact models	9850936
Impact X 410, 440, 540I	2420453

Capspray™

COMPLETE FILTER SET	PART NO.
Capspray 75	0275793
Capspray 95, 105, 115	0275794

CAPSPRAY PRESSURE POT	PART NO.
2.5 Gallon Pressure Pot Gasket	0508943

MAXUM II / ELITE GUN	PART NO.
Needle Packing	0275579
Check Valve Kit (3-pack)	0297051
Cup Gasket (6-pack)	0297052
Check Valve Seal Kit (10-pack)	0276257
Maxum II Gun Repair Kit	0277943
Maxum Elite Gun Repair Kit	0524187

PowrTwin™ / Hydra X™

PACKING KITS	PART NO.
PowrTwin 4900	107-051
PowrTwin 6900 DI	143-051
PowrTwin 6900, 8900, 12000	144-050
Hydra X 4540 PTFE Kit	2420804
Hydra X 4540 PTFE/Leather Kit	2414183
Hydra X 7230 PTFE Kit	2414182
Hydra X 7230 PTFE/Leather Kit	2420803

HYDRAULIC MOTOR KIT	PART NO.
All PowrTwin Models	235-050
Hydra X	2413196

CYLINDERS	PART NO.
PowrTwin 4900	107-946
PowrTwin 6900	143-822
PowrTwin 8900, 12000	144-832

PISTON RODS	PART NO.
PowrTwin 4900	107-029
PowrTwin 6900	143-127A
PowrTwin 6900 DI	451-131A
PowrTwin 8900, 12000	144-117
Hydra X 4540	2401633A
Hydra X 7230	2403446A

SPOOL VALVE	PART NO.
All PowrTwin Models	441-908A

PRIME/SPRAY VALVE	PART NO.
All PowrTwin Models	944-030A
Hydra X	945-600A

PowrLiner™

PACKING KITS	PART NO.
PowrLiner 550, 850	759-365
PowrLiner 4955	107-051
PowrLiner 6955, 8955	144-050

PISTON RODS	PART NO.
PowrLiner 4955	107-029
PowrLiner 6955	143-127A
PowrLiner 8955	144-117

HYDRAULIC MOTOR KIT	PART NO.
PowrLiner 4955, 6955, 8955	235-050

PRIME/SPRAY VALVE	PART NO.
PowrLiner 550, 850	759-380
PowrLiner 4955, 6955, 8955	944-030A

SPOOL VALVE	PART NO.
All Hydraulic PowrLiners	441-908A

Elite® 3000, 3500 / PowrLiner 3500

SERVICE KITS	PART NO.
Valve Kit for 3000/3500 Models	0537903
Diaphragm Kit for 3000/3500 Models	340241

Airless Guns

PACKING KITS	PART NO.
RX-Pro® / RX-Apex™ Ball Valve Kit	0538221
RX-Pro Packing Kit	0538204
RX-80™	0538215
RX-Apex Needle Assembly	0538253

TIP SEAL	PART NO.
Solvent Resistant White Seal	651-020

SADDLE	PART NO.
Metal Retainer	0297007

Liquids

	PART NO.
Piston Lube 4 oz	314-481
LS-10 Liquid Shield Plus™ (1 Qt.)	314-482
Coolflo™ Hydraulic Fluid (1 Gallon)	430-361
Coolflo Hydraulic Fluid (1 Qt.)	430-362

Please consider your local area and knowledge of equipment in the field before placing initial Service Center stocking order.

RECOMMENDED SERVICE CENTER TOOLS

Titan Lower Packing Insertion Tools

DESCRIPTION	PART NO.
Impact* 740, 840, 1140, 840i, 1140i, 840ix, 1140ix	800-359
Advantage 400, 500; Impact 440, 540, 640, 440i, 640i, 440ix	0551509
Impact 640ix; EPX 2155, 2255	0551509

HVLP and Capspray

DESCRIPTION
Additional Tools
1/8", 3/8" Allen Wrenches
3/8", 7/16" Combination Open End Box Wrenches
22 mm Combination Open End Box Wrench
7/8" Deep Socket
T20 Torx Bit

Electric

DESCRIPTION	PART NO.
Diagnostic Display	0521014
Pressure Gauge	0508239
Impact Motor Hall Tester	0521016

Additional Tools
Multi-Test Meter
8", 12", 16" Adjustable Wrenches
Open End Box Wrenches, 1/4" thru 5/8"
3/8" and 1/4" Socket Sets
3/8" and 1/4" Extensions
3/8" and 1/4" Drive Long Allen Socket Sets, 1/8" thru 3/8"
Plastic Mallet
Assorted Pick Tools
6" Bench Vice
T-15 Torx Driver

Hydraulic and Air Powered

DESCRIPTION	PART NO.
Hydraulic Pressure Gauge Kit	990-050
Fluid Pressure Gauge	0508239

Additional Tools
Spanner Wrench, Martin 1/4" Pin, 2"-4, 3/4 # 0474
Snap Ring Pliers, Knipex 44-11-J3, 44-21-J31
.010 Feeler Gauge
3/8" Socket Wrench
7/16" 3/8 Drive Deep Socket
1/2" Socket Wrench
1/2" 6" Extension
T25 Torx Bit
8", 12", 16" Adjustable Wrenches
12" Pipe Wrench
#7 Vice Grip Pliers
Plastic Mallet
Assorted Pick Tools
1/4" Punch
1/2" PVC pipe cut to 12"
6" Bench Vice
5/8" and 3/4" Allen Wrench Socket Bits

TITAN ANNUAL 2-FOR-1 STOCK EXCHANGE PROGRAM

1. Titan Authorized Service Center submits to Titan Technical Service a list of the parts they wish to return along with the prices originally paid for these parts.
 - a. Parts must be unused, in their original packaging and the packaging must be in new and sellable condition. Your local Titan Sales Rep needs to verify the condition of the parts prior to return. Electronic components, in particular motors and control boards, are not eligible for return.
 - b. Parts submitted must be current parts. Parts that are in our database as Obsolete or Use Up are not eligible for return. Titan Technical Service will verify that all parts are current, and has final say on which parts can or cannot be submitted for return.
2. Titan Technical Service will communicate the total accepted dollar value of the return. After learning dollar value of the return, Titan Authorized Service Center places an order for twice the value of the return.
Ex: \$1000 worth of parts to be returned would require a \$2000 order of units, parts or accessories
3. Once Titan has received the 2-for-1 order from the Titan Authorized Service Center, an RGA for the parts return will be issued to the Titan Authorized Service Center.
RGA # needs to be marked on the outside of all shipping cartons.
4. Titan Authorized Service Center may now ship the return to Titan. Freight is the responsibility of the Titan Authorized Service Center.

Available once per year between September 1–December 31, 2025.

 - Only Titan Authorized Service Centers are eligible
 - Returns are limited to service parts and accessories. Units are not eligible.

WARRANTY LABOR ALLOWANCE FLAT RATE CHART

Electric Piston Pumps

EQUIPMENT	TIME (MINUTES)	
	LABOR	DIAGNOSTICS
Fluid Section	30	30
Prime Spray	20	20
Circuit Board	60	30
Transducer	45	30
Potentiometer	45	30
Relay	45	30
Circuit Breaker	45	30
Gearbox	60	30
Electric Motor	60	30

Gas Piston Pumps

EQUIPMENT	TIME (MINUTES)	
	LABOR	DIAGNOSTICS
Gas Engine	30	30
Fluid Section	30	30
Prime Spray Valve	20	20
Circuit Board	60	30
Transducer	45	30
Potentiometer	45	30
Gearbox	60	30

Sealed Hydraulic/Diaphragm Pumps

EQUIPMENT	TIME (MINUTES)	
	LABOR	DIAGNOSTICS
Inlet/Outlet Valves	20	20
Prime Spray Valve	20	20
Pressure Control Valve	20	20
Hydraulic Area	60	30
Electric Motor	60	30

HVLP

EQUIPMENT	TIME (MINUTES)	
	LABOR	DIAGNOSTICS
Compressor	30	15
Switch	15	10
Turbine	60	15

PowrTwin/PowrLiner/PowrBeast

EQUIPMENT	TIME (MINUTES)	
	LABOR	DIAGNOSTICS
Hydraulic Motor	90	30
Hydraulic Pump	120	30
Bleed Valve	20	20
Fan, Pulley and Belt	45	20
Hydraulic Hose and Fittings	30	20
Electric Motor	20	10
Gas Engine	20	10
Fluid Section	60	30

Hydra / Hydra X

EQUIPMENT	TIME (MINUTES)	
	LABOR	DIAGNOSTICS
Hydraulic Motor	150	30
Hydraulic Pump	180	30
Bleed Valve	20	20
Fan, Pulley and Belt	45	20
Hydraulic Hose and Fittings	30	20
Gas Engine	60	20
Fluid Section	60	30

Air Driven Pumps

EQUIPMENT	TIME (MINUTES)	
	LABOR	DIAGNOSTICS
Air Motor	60	30
Bleed Valve	20	20
Lubricator	20	20
Moisture Separator	20	20
Air Regulator	20	20
Fluid Section	60	30

NOTE: Only one diagnostic and testing claim can be made per repair.

SERVICE PARTS BULK BUY PROGRAM

WHEN PURCHASING ANY SINGLE SERVICE PART ON THIS LIST IN QUANTITY 5+, SERVICE CENTERS RECEIVE AN EXTRA 10% OFF.

ORDERS OVER \$750 ARE ELIGIBLE FOR FREE FREIGHT

Not eligible to be ordered as part of Express Parts Program. Bulk ordered items are not eligible for return as part of 2 for 1 stock exchange program.

Piston Rods

DESCRIPTION	PART NO.
Impact* 410, 440, 540, 640, 640I, 640IA	704-551A
Impact 740, 840, 840I, 840IA	805-437A
Impact 1040, 1140, 1140I, 1140IA	805-456A
Impact X 410, 440, 540I	2420579A

Piston Assemblies

DESCRIPTION	PART NO.
Impact 410, 440, 540, 640, 640I, 640IA	704-552A
Impact 740, 840, 840I, 840IA	805-235A
Impact 1040, 1140, 1140I, 1140IA	805-247A
Impact X 410, 440, 540I	2420580A

Transducers

DESCRIPTION	PART NO.
Impact 410	551112
Impact 440, 540, 640, 640I, 640IA	704-492A
Impact 740, 840, 840I, 840IA, 1040, 1140, 1140I, 1140IA	800-437
Impact X 410, 440, 540I	2427607A

Prime/Spray Valves

DESCRIPTION	PART NO.
Impact	700-258
Impact X 410, 440, 540I	2440405
All PowrTwin; PowrLiner 4900 and Larger	944-030A
Elite 3500; PowrLiner 3500	169248

Gun Kits

DESCRIPTION	PART NO.
RX-80 Gun Repair Kit	538215
RX-Pro and RX-Apex Ball Valve Kit	538221
RX-Pro Packing Seal Assembly	0538204A
RX-Apex Packing Seal Assembly	538253

Hydraulic Service Parts

DESCRIPTION	PART NO.
Hydraulic Motor Kit for PowrTwin, PowrLiner	235-050
Hydraulic Filter for PowrTwin, PowrLiner	451-220
Titan Coolflo Hydraulic Fluid (1 Qt.)	430-362

Suction Sets

DESCRIPTION	PART NO.
Siphon and Return Tube Assembly - Fits all 410, 440, 540, 640 Skid and Low Rider Models (i, ix, Impact, Impact X)	2440409

Packing Kits

DESCRIPTION	PART NO.
Impact 340, 400	532911
Impact 410, 440, 540, 640; Impact X 410, 440, 540I	704-586B
Impact 740, 840, 840I, 840IA	805-1010
Impact 1040, 1140, 1140I, 1140IA	558740
Hydra Pro IV; PowrCoat 730, 940	185-050
PowrLiner 800, 850	759-365
PowrTwin 4900; PowrLiner 4955	107-051
PowrTwin 6900; PowrLiner 6955	143-050
PowrTwin 8900, 12000; PowrLiner 8955	144-050

Motor Brushes

DESCRIPTION	PART NO.
Impact 410	508645
Impact 400, 440	805-272

HVLP Filter Sets

DESCRIPTION	PART NO.
Capspray 75	275793
Capspray 95, 105, 115	275794

Sealed Hydraulic Parts

DESCRIPTION	PART NO.
ED655 Plus / AirCoat Diaphragm	278240
ED655 Plus / AirCoat Inlet Valve Kit	278242
ED655 Plus Outlet Valve Kit	508198
Elite 3000 Diaphragm Kit	2393138
Elite 3500 / PowrLiner 3500 Diaphragm Kit	340241
Elite 3000, 3500 / PowrLiner 3500 Valve Kit (In/Out)	537903

Maxum Gun Parts

DESCRIPTION	PART NO.
Check Valve Kit Maxum II Gun (Qty. 3)	297051
Check Valve Seals (Qty. 10)	276257
Cup Gasket Kit (Qty. 6)	297052
Gun Repair Kit Maxum II	277943
Gun Repair Kit Maxum Elite	524187
Needle Packing	275579

EXPRESS PARTS PROGRAM

THE TITAN EXPRESS SERVICE PARTS PROGRAM IS DESIGNED TO PROVIDE YOU AND YOUR CUSTOMER WITH THE SATISFACTION YOU ARE ACCUSTOMED TO WITH FAST-EXPEDITED SERVICE OF GENUINE TITAN PARTS.

Same-day Shipments on Parts

Our Express Service Parts Program offers same-day shipping of the most common service parts to maintain your Titan brand equipment. All Express Service Parts Orders received before 2 p.m. (CT) will be shipped the same business day with free freight via UPS 2nd Day Air, if requested. All Express Parts Orders received after 2 p.m. (CST) will be shipped next business day with free freight via UPS 2nd Day Air, if requested.



FREE 2ND DAY AIR IS AVAILABLE UPON REQUEST FOR ALL EXPRESS SERVICE PARTS ORDERS!

Ordering Instructions

Email/EDI/Phone your express parts order:

1. Email Orders: Orders may be emailed to titancustomerservice@titantool.com. Express Parts Orders received prior to 2pm CT, Monday–Friday, with request for 2nd day shipping will be processed and shipped the same day.
2. EDI Orders: Customers who order via EDI can order with their normal processes and do not need to contact Customer Service.
3. Telephone Orders: Customer Service is open from 7:00am to 5:00pm (CT) Monday–Friday by calling 800-526-5362.

Ordering Policies

1. Minimum Order: A single purchase order of \$50.00 or greater is required or a \$10.00 service charge will be incurred
2. Shipping Charges: All orders with a total value of \$50.00 or greater will be shipped UPS 2nd Day Air (if requested) freight prepaid on any combination of the Express service parts listed on the order form. Any back orders from parts on this list will be shipped prepaid 2nd Day, if requested.
3. Non-Express Parts: Service parts (NON-EXPRESS PARTS) NOT listed on the order form are NOT eligible for express delivery nor can they be included on the SAME purchase order for Express Parts. Orders for items other than those identified within the Express Parts Program must be ordered on a separate purchase order number and must meet our \$50.00 minimum order and shipping policy requirements.
4. Express Parts orders are not eligible to be drop shipped.

Impact Series

PACKING KITS	
PART NO.	DESCRIPTION
704-586B	Impact 410–640; Impact X 410, 440, 540I
805-1010	Impact 740, 840
558740	Impact 1040, 1140
800-730	Impact 1040T

PUMP FILTERS	
PART NO.	DESCRIPTION
89957	Impact 410
730-067	Impact 440–1140
2424933	Impact X 410, 440, 540I

INLET SCREENS	
PART NO.	DESCRIPTION
700-805	Impact/Impact X Skid and LR's
710-046	Impact/Impact X HR's
451-018	Impact 1040T

PISTON RODS	
PART NO.	DESCRIPTION
704-551A	Impact 410–640
704-552A	Impact 410–640 Assy.
805-437A	Impact 740–840
805-456A	Impact 1040, 1140
0507732	Impact 1040T
2420579A	Impact X 410, 440, 540I
2420580A	Impact X 410, 440, 540I Assy.

PRIME SPRAY VALVES	
PART NO.	DESCRIPTION
700-258	Impact 440–1140
507690	Impact 410
2440405	Impact X 410, 440, 540I

TRANSDUCERS	
PART NO.	DESCRIPTION
551112	Impact 410
704-492A	Impact 440, 540, 640
800-437	Impact 740 thru 1140
2427607A	Impact X 410, 440, 540I

Impact Series (cont.)

MOTORS	
PART NO.	DESCRIPTION
0558353A	Impact 410
0558373A	Impact 440
805-264A	Impact 540, 640, 640I, 640IA
805-265A	Impact 740, 840, 840I, 840IA
805-271A	Impact 1040, 1040T, 1140, 1140I, 1140IA
2463224	Impact X 120 18V
2425488A	Impact X 410, 440, 540I

BOARDS, CONTROLLERS	
PART NO.	DESCRIPTION
522143A	Impact 410
805-402A	Impact 440
805-837	Impact 540
805-838	Impact 640
2419746	Impact 640I, 640IA
805-839	Impact 740
805-840	Impact 840
2419750	Impact 840I, 840IA
552990	Impact 1040
2406681	Impact 1040T
805-841	Impact 1140
2419754	Impact 1140I, 1140IA
2464794	Impact X 120 18V
2452239	Impact X 410
2425490A	Impact X 440, 540I

MISCELLANEOUS		
PART NO.	DESCRIPTION	MODEL
805-272	Motor Brushes	Impact 440
800-929	Fuse	Impact 540–840; Impact X 410, 440, 540I
522404	Fuse	Impact 1040, 1140
551972	Surge Suppressor	Impact 540–1140
762-137	Inlet Seat	Impact 410–640
704-558	Outlet Seat	Impact 410–640
310	Inlet Seat	Impact 740–1140
294516	Outlet Seat	Impact 740–1140
2464055	Fluid Section	Impact X 120 18V

NOTE: All Impact IntelliSync® 640, 840 and 1140 I/IA series sprayers have the same service parts as the equivalent Impact 640, 840 and 1140 series model, unless otherwise noted.

Capspray Series

TURBINE KITS	
PART NO.	DESCRIPTION
0524288A	Capspray 75
0524289A	Capspray 95
0524280A	Capspray 105
0524290A	Capspray 115

FILTER KITS	
PART NO.	DESCRIPTION
275793	Capspray 75
275794	Capspray 95, 105, 115

Sealed Hydraulic

REPAIR KITS		
PART NO.	DESCRIPTION	MODEL
2442908	Inlet Valve	Elite 2000
2443904	Outlet Valve	Elite 2000
537903	Inlet and Outlet	Elite 3000, 3500
2419852	Inlet and Outlet	Elite 5500
278242	Inlet Valve	ED655

DIAPHRAGM	
PART NO.	DESCRIPTION
278240	ED655, AirCoat
2444797	Elite 2000
340241	Elite 3000, 3500
2419185	Elite 5500

PUMP FILTERS	
PART NO.	DESCRIPTION
730-067	Elite 2000, 3000, 3500, 5500

INLET SCREENS	
PART NO.	DESCRIPTION
2444491	Elite 2000
2323325	Elite 3000
710-046	Elite 3500, 5500

PRIME SPRAY VALVES	
PART NO.	DESCRIPTION
555850	ED655, AirCoat
2443921	Elite 2000
2369631	Elite 3000
169248	Elite 3500, 5500

EXPRESS PARTS PROGRAM

Sealed Hydraulic (cont.)

MISCELLANEOUS		
PART NO.	DESCRIPTION	MODEL
2374324	Filter Assy., Pulsation Dampener	Elite 3500
2405643	Metering Orifice	Elite 3500
2419184	Filter Assy., Pulsation Dampener	Elite 5500
2402215	Metering Orifice	Elite 5500

PowrTwin

PACKING KITS	
PART NO.	DESCRIPTION
107-051	PowrTwin 4900
143-050	PowrTwin 6900
143-051	PowrTwin 6900 DI
144-050	PowrTwin 8900, 12000

PUMP FILTERS	
PART NO.	DESCRIPTION
930-006	50-Mesh PowrTwin
930-005	5-Mesh PowrTwin
930-004	0-Mesh PowrTwin

ROCK CATCHERS	
PART NO.	DESCRIPTION
0509762A	PowrTwins

PRIME SPRAY VALVES	
PART NO.	DESCRIPTION
944-030A	PowrTwin

PISTON/DISPLACEMENT RODS	
PART NO.	DESCRIPTION
107-029	PowrTwin 4900
143-127A	PowrTwin 6900
451-131A	PowrTwin 6900 DI
144-117	PowrTwin 8900, 12000

HYDRAULICS	
PART NO.	DESCRIPTION
235-050	Motor Kit
441-908A	Spool Valve
449-751	Hydraulic Pump (4900)
449-752A	Hydraulic Pump (6900–12000)
451-220	Hydraulic Filter

PowrTwin (cont.)

MISCELLANEOUS		
PART NO.	DESCRIPTION	MODEL
107-946	Cylinder	PowrTwin 4900
143-822	Cylinder	PowrTwin 6900
144-832	Cylinder	PowrTwin 8900, 12000
235-021A	Trip Rod	PowrTwin 4900, 6900
236-021A	Trip Rod	PowrTwin 8900, 12000
509623	Foot Valve Seat	PowrTwin
107-058	Outlet Seat	PowrTwin 4900
236-012	Outlet Seat	PowrTwin 6900, 8900, 12000

PowrLiner

PACKING KITS	
PART NO.	DESCRIPTION
759-365	PowrLiner 850
107-051	PowrLiner 4955
143-050	PowrLiner 6955
144-050	PowrLiner 8955

REPAIR KITS		
PART NO.	DESCRIPTION	MODEL
537903	Inlet/Outlet	PowrLiner 3500
340241	Diaphragm	PowrLiner 3500
2419852	Inlet/Outlet	PowrLiner 5500
2419185	Diaphragm	PowrLiner 5500

PUMP FILTERS	
PART NO.	DESCRIPTION
730-067	PowrLiner 3500, 5500
930-006	PowrLiner 4955–8955

INLET SCREENS	
PART NO.	DESCRIPTION
0516697A	PowrLiner 850
710-046	PowrLiner 3500, 5500
0509762A	PowrLiner 4955–8955

PowrLiner (cont.)

PISTON/DISPLACEMENT RODS	
PART NO.	DESCRIPTION
107-029	PowrLiner 4955
143-127A	PowrLiner 6955
144-117	PowrLiner 8955

PRIME SPRAY VALVES	
PART NO.	DESCRIPTION
759-380	PowrLiner 850
169248	PowrLiner 3500, 5500
944-030A	PowrLiner 4955–8955

HYDRAULICS	
PART NO.	DESCRIPTION
235-050	Motor Kit
441-908A	Spool Valve
449-751	Hydraulic Pump (4955)
449-752A	Hydraulic Pump (6955, 8955)
451-220	Hydraulic Filter

MISCELLANEOUS		
PART NO.	DESCRIPTION	MODEL
759-379	Inlet Valve	PowrLiner 850
2405643	Metering Orifice Kit	PowrLiner 3500
107-946	Cylinder	PowrLiner 4955
2402215	Metering Orifice Kit	PowrLiner 5500
143-822	Cylinder	PowrLiner 6955
144-832	Cylinder	PowrLiner 8955
235-021A	Trip Rod	PowrLiner 4955, 6955
236-021A	Trip Rod	PowrLiner 8955
762-137	Foot Valve Seat	PowrLiner 4955
509623	Foot Valve Seat	PowrLiner 6955, 8955
107-058	Outlet Seat	PowrLiner 4955
236-012	Outlet Seat	PowrLiner 6955, 8955

EXPRESS PARTS PROGRAM

PowrCoat/Hydra X

PACKING KITS	
PART NO.	DESCRIPTION
155-055	PowrCoat 745, 960
140-052	PowrCoat 975
533936	PowrCoat 1045
533937	PowrCoat 1064
533938	PowrCoat 1072
185-050	PowrCoat 730, 940
2420804	Hydra X 4540 PTFE Kit
2414183	Hydra X 4540 PTFE/Leather Kit
2414182	Hydra X 7230 PTFE Kit
2420803	Hydra X 7230 PTFE/Leather Kit

PUMP FILTERS	
PART NO.	DESCRIPTION
920-004	PowrCoat 730–975
533514	PowrCoat 1045, 1064, 1072

ROCK CATCHERS	
PART NO.	DESCRIPTION
2404794	Hydra X
0509762A	PowrCoat 730–975
533968	PowrCoat 1045–1072

PISTON/DISPLACEMENT RODS	
PART NO.	DESCRIPTION
185-984A	PowrCoat 730, 940
2401633A	Hydra X 4540
2403446A	Hydra X 7230
155-982	PowrCoat 745, 960
138-917	PowrCoat 975
533677	PowrCoat 1045
533689	PowrCoat 1064
533939	PowrCoat 1072

PRIME SPRAY VALVES	
PART NO.	DESCRIPTION
533517	PowrCoat 1045–1075
944-028A	PowrCoat 730–975
945-600A	Hydra X

PowrCoat/Hydra (cont.)

HYDRAULICS & ELECTRONICS	
PART NO.	DESCRIPTION
2413196	Hydra X Hydraulic Motor Kit
2410138A	Hydra X Controller Assembly
2401652A	Hydra X Lift Assembly
2401651A	Hydra X Linear Actuator
2401711A	Hydra X Hydraulic Pump Assembly
2412892	Hydra X Hydraulic Piston Assembly
2412949	Hydra X Oil Filter

AIR MOTOR SERVICE KITS	
PART NO.	DESCRIPTION
742-051	PowrCoat 730–745
850-050	PowrCoat 940–975
533935	PowrCoat 1045–1072

MISCELLANEOUS		
PART NO.	DESCRIPTION	MODEL
183-930	Cylinder	PowrCoat 730, 940
155-932	Cylinder	PowrCoat 745, 960
140-922	Cylinder	PowrCoat 975
533676	Cylinder	PowrCoat 1045
533688	Cylinder	PowrCoat 1064
533699	Cylinder	PowrCoat 1072
2413253A	Cylinder	Hydra X 4540
2413250A	Cylinder	Hydra X 7230
743-012	Trip Rod	PowrCoat 730–975
533256	Trip Rod	PowrCoat 1045–1072
183-992	Foot Valve	PowrCoat 730, 940
155-991	Foot Valve	PowrCoat 745, 960
140-991	Foot Valve	PowrCoat 975
533684	Foot Valve	PowrCoat 1045
533695	Foot Valve	PowrCoat 1064, 1072
533683	Inlet Seat	Hydra X 4540
533694	Inlet Seat	Hydra X 7230
182-921A	Outlet Seat	PowrCoat 730, 940
155-921	Outlet Seat	PowrCoat 745, 960
143-945A	Outlet Seat	PowrCoat 975
533679	Outlet Seat	PowrCoat 1045, Hydra X 4540
533691	Outlet Seat	PowrCoat 1064
533942	Outlet Seat	PowrCoat 1072, Hydra X 7230

TERMS & CONDITIONS OF SALE

Conditions of Acceptance

Published prices are subject to change without notice. The Terms detailed on this price list apply to orders accepted by Titan regardless of terms or prices discussed, requested or stated on purchase orders.

Only Titan corporate Officers and Directors have authority to deviate from the Terms and Conditions in this price list. No merchandise is shipped on consignment or guaranteed sale basis.

Terms of Payment

Standard payment terms are Net 30 days. All payment terms are based on date of invoice (D.O.I.), not date merchandise is received.

Shipping Policies

All shipments are F.O.B. Minneapolis, MN. Freight is prepaid and allowed on orders with a net invoice value of \$3,000 or more, shipped to a single location within the continental USA. Titan reserves the right to select the most economical routing. Contact Titan for shipments outside the continental USA.

Orders under \$3,000 will be shipped prepaid and charged. Air freight or any expedited modes requested by the customer are prepaid and charged regardless of the net invoice value.

Any backorder will be shipped standard ground freight at Titan's expense.

All fees for special services including but not limited to lift gate, residential delivery, signature required, etc. will be added to the invoice at the freight carrier's current rate.

Minimum Order

Minimum billing is \$50 net invoice exclusive of taxes or freight charges. Orders under \$50 will be assessed a \$10 service charge.

Express Parts Program

Items included in the Express Parts Program will ship 2nd Day Air when requested. All other items are subject to the Minimum Order and Shipping Policy.

Product Return Policy

All product returns must have prior authorization through Titan Customer Service and be issued a Returned Goods Authorization Number (RGA).

The following apply to all product returns:

1. A request for a product return must be initiated within two months (60 days) after product receipt.
2. Product returned must be in its original condition and original packaging.
3. Discontinued or private labeled product cannot be returned for credit.
4. Once a return is received, the condition and quantity will be inspected and compared against the RGA to determine if full credit will be issued.
5. The customer is responsible for freight costs associated with a return except in the case of product defect or company error.
6. All product returns are subject to a 25% restocking fee. The restocking fee will be waived if a purchase order is received equal to twice the dollar value of the product being returned. The RGA will be issued after shipment of the two for one order.
7. Unauthorized product returns will be refused and returned at sender's expense.

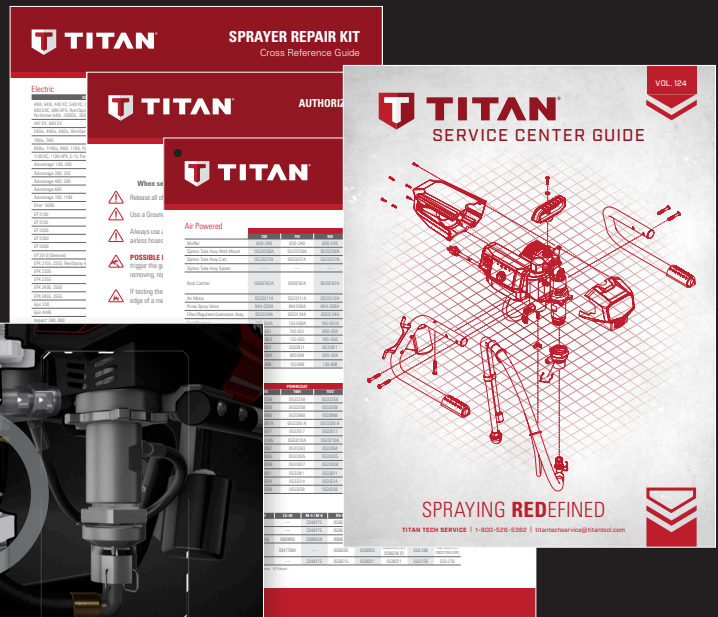
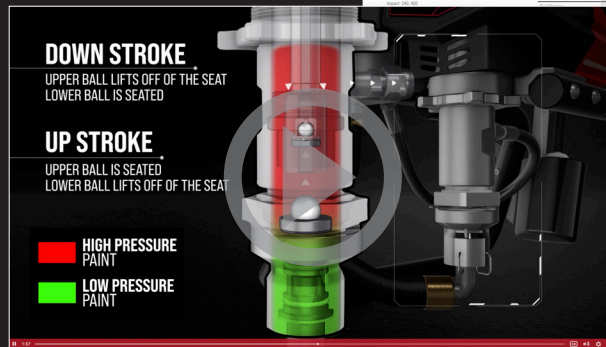
TRY OUR NEW TECH SERVICE CHANNEL

THE FIRST STOP FOR ALL LEVELS OF SERVICE TECHNICIANS

Need some training or a refresh on sprayer maintenance? Dive into our Tech Service resources and videos, learn how to fix common issues or sprayer maintenance with the help of our Technical Service Team.



Scan to
learn more!



TITAN[®] TECHCONNECT

Live video troubleshooting platform

Introducing TechConnect from Titan, a live video troubleshooting platform that allows you to show our Technical Service Team exactly what your issue is — no more trying to describe what happened over the phone.

- Fast and efficient
- Share video directly from your smart device
- No app required
- Free, enhanced support backed by the team you trust



1770 Fernbrook Lane, Plymouth, MN 55447 | TitanTool.com

12/24 2413389 JB72706H