

VOL. 325



# TITAN<sup>®</sup>

## FULL LINE CATALOG



SCAN FOR  
DIGITAL COPY





# THE BEST AND LONGEST WARRANTY IN THE INDUSTRY

## Four-Year Manufacturer's Defect

We pledge that our sprayers are free from defects in materials and workmanship. This excludes normal wear items and consumables such as filters, piston, packings, spray tips, spray guns, hoses, etc.

## Lifetime DuraLife HE and PMDC Motor Warranty

If the motor fails for any reason (including wear) for as long as you own the sprayer, we will replace the motor at no cost to you.

## Limited Lifetime DCX Motor Warranty

If the motor fails from normal usage for as long as you own the sprayer, we will replace the motor at no cost to you.

## Lifetime Drive Train Warranty

If the drive train fails from normal usage for as long as you own the sprayer, we will replace the drive train at no cost to you.

## Lifetime Warranty on PermaStroke Technology™ Fluid Pump

Get a lifetime warranty on the PermaStroke Technology fluid pump. If the fluid pump fails for any reason (including wear) for as long as you own the sprayer, we will replace the fluid pump at no cost.

## Two-Year Turbine Warranty

## Gas Engine Warranty

Three-year Honda® and two-years all others.

## AMPSHare by Bosch® Warranty

Three-year limited warranty on batteries and five-year limited warranty on battery chargers.

## Honda eGX System Warranty

Honda provides a 3 year warranty on their eGX motors, and a 2 year warranty on eGX batteries and eGX chargers.

## 35-Day Satisfaction Guarantee

If for any reason the sprayer does not perform up to your expectations within 35 days, the sprayer can be exchanged for the identical model or full credit toward the purchase of a Titan sprayer of larger size and value.

## Express Parts Program

- More than 550 Authorized Service Centers nationwide
- The most common repair parts are guaranteed to be in stock 100% of the time
- If for any reason your preferred Authorized Service Center is out of stock, free 2nd day air is available when ordered by 3:00 pm (EST)

**GO TO [TITANWEARGUARD.COM](http://TITANWEARGUARD.COM) FOR MORE INFORMATION**



## FULL LINE CATALOG

### **04 IMPACT X™**

Taking jobsite performance to the next level with features that enhance performance X-potentially.

### **05 IMPACT INTELLISYNC®**

These fully featured sprayers offer the ultimate in functionality and convenience.

### **06 IMPACT®**

Durable electric airless sprayers built with smart features that make an Impact.

### **07 POWRTWIN™**

For large-scale residential, commercial and industrial applications.

### **08 POWRTWIN DI**

The most powerful portable sprayers on the market today.

### **08 POWRBEAST®**

Heavy-duty direct immersion sprayers capable of spraying light- to heavy-bodied coatings.

### **09 ELITE®**

Perfect for the pro that never wants to replace the sprayer's piston, packings, cylinder, or clutch.

### **10 HYDRA X™**

The ultimate sprayers for any job where maximum power is required.

### **11 BATTERY-POWERED**

Portable sprayers outfitted with Powerful AMPShare™ by Bosch® 18V batteries.

### **12 CAPSPRAY™**

Maximize productivity and profit with these lightweight, portable sprayers.

### **13 FINE FINISHING**

Delivers beautiful finishes quickly and easily.

### **14 POWRcoat™**

Pneumatic sprayers for virtually any heavy-duty application.

### **15 POWRLINER™**

A broad line of pavement- and turf-marking equipment for all size projects.

### **16 AIRLESS GUNS**

Guns that deliver a perfect finish the first time—every time.

### **18 AIRLESS TIPS**

Renowned in the industry for their fan pattern consistency and long life.

## OUR MISSION

When your business depends on the tools you use,  
you need to be able to count on the people who make them.

Our relentless commitment to helping every professional painter be their  
best leads to better work, improved ROI and growing business.

# IMPACT X™ SERIES

## Features:

### MaxFX™ Fluid Section

Quick-change fluid section that is replaceable in minutes on the jobsite



### DuraLife™ HE Brushless Motor

Optimized for every tip size and every painter's technique



### Logix™ Adaptive Pressure Control System

Enhances performance through innovative tip-sensing technology

### Vertical Filter Housing

Completely drains coatings and maximizes filtering area ensuring full filtration of material



Connects sprayer to the MyTitan mobile app  
(Available on 540i only)

## THE NEXT GENERATION

Multiply your productivity Xponentially with the Xtended line of Impact sprayers, now with more variety and more options. They're the Impact sprayers you know and love re-engineered and re-imagined for the future. Spray faster, smarter, and better every time.



Impact X 440 Skid

Impact X 410 Skid



Impact X 540i Low Rider



Impact X 540i High Rider



	Impact X 410	Impact X 440	Impact X 540i
<b>SPECIFICATIONS</b>			
Max. Delivery	0.47 gpm	0.54 gpm	0.54 gpm
Max. Tip Size (1-Gun)	0.021"	0.023"	0.023"
Max. Operating Pressure	3300 psi	3300 psi	3300 psi
Gun Included	RX-80	RX-80	RX-Pro
Motor (120V)	7/8 hp DuraLife HE Brushless	1.20 hp DuraLife HE Brushless	1.20 hp DuraLife HE Brushless
<b>CONFIGURATIONS</b>			
	<b>PART NO.</b>		
Skid	2430897	2429069	2431656
High Rider	2430869	2430510	2431657
Low Rider	----	----	2431658

All configurations come with a 517 HEA Tip and 1/4" x 50' airless hose.

The Bluetooth® word mark and logos are registered trademarks owned by Bluetooth SIG, Inc. and any use of such marks by Titan is under license. Other trademarks and trade names are those of their respective owners.

# IMPACT INTELLISYNC® SERIES

## Features:

### Field Serviceable Fluid Section

EasyOut™ Fluid section is easy to replace on the jobsite, no tools required

### DuraLife™ HE Brushless Motor

Optimized for every tip size and every painter's technique

### Logix™ Adaptive Pressure Control System

Enhances performance through all-new tip-sensing technology

### Digi-Trac™ Digital Display

Available on I models only

No pressure fluctuation, X-Lock anti-theft and resettable gallon counter and hour meter



### AutoOiler™

Deliver oil to the packings with the push of a button.



Connects sprayer to the MyTitan mobile app



Integrated GPS system gives your real-time location of sprayer (Available on Impact IA models only)

## CONNECTED APP-DRIVEN SPRAYERS

These fully featured sprayers offer the ultimate in functionality and convenience for the longest days and biggest projects. Capable of supporting large tip sizes and multiple guns, you can rely on the power and performance of the Impact Intellisync sprayers.



Impact 1140i High Rider ▼



Impact 1140iA Low Rider ▼

	Impact 640i & IA	Impact 840i & IA	Impact 1140i & IA
<b>SPECIFICATIONS</b>			
Max. Delivery	0.70 gpm	1.00 gpm	1.20 gpm
Max. Operating Pressure	3300 psi	3300 psi	3300 psi
Max. Tip Size (1-Gun)	0.027"	0.032"	0.034"
Max. Tip Size (2-Guns)	---	0.021"	0.023"
Gun Included	RX-Pro	RX-Pro	RX-Pro
Motor (120V)	1.55 hp DuraLife HE Brushless	2.3 hp DuraLife HE Brushless	2.6 hp DuraLife HE Brushless
<b>CONFIGURATIONS</b>			
	<b>PART NO.</b>	<b>PART NO.</b>	<b>PART NO.</b>
Skid I	2419187	---	---
Skid IA	2418753	---	---
High Rider I	2419194	2419303	2419294
High Rider IA	2419011	2419222	2419291
Low Rider I	2419039	2419300	2454245
Low Rider IA	2419038	2419297	2454244

All configurations come with a 517 HEA Tip and 1/4" x 50' airless hose.

The Bluetooth® word mark and logos are registered trademarks owned by Bluetooth SIG, Inc. and any use of such marks by Titan is under license. Other trademarks and trade names are those of their respective owners.

# IMPACT<sup>®</sup> SERIES

## Features:

### Field Serviceable Fluid Section

One-piece polyethylene packings and no cylinder to wear out

### DuraLife<sup>™</sup> HE Brushless Motor

Optimized for every tip size and every painter's technique

### AutoOiler<sup>™</sup>

Deliver oil to the packings with the push of a button



Business is demanding and you need the kind of performance you expect from Titan sprayers. It's time to invest in the expanded features and performance that will make a major IMPACT on your profit margin.



Impact 740  
High Rider



Impact 1040  
Low Rider



Impact 1040  
High Rider



Impact 1040T  
High Rider

	Impact 740	Impact 1040	Impact 1040T
<b>SPECIFICATIONS</b>			
Max. Delivery	0.80 gpm	1.15 gpm	1.15 gpm
Max. Tip Size (1-Gun)	0.029"	0.033"	0.033"
Max. Tip Size (2-Guns)	0.019"	0.022"	0.022"
Max. Operating Pressure	3300 psi	3300 psi	3300 psi
Gun Included	RX-Pro	RX-Pro	RX-Apex <sup>™</sup> Non-Filter
Motor (120V)	2.00 hp DuraLife HE Brushless	2.50 hp DuraLife HE Brushless	2.50 hp DuraLife HE Brushless
<b>CONFIGURATIONS</b>			
	<b>PART NO.</b>	<b>PART NO.</b>	<b>PART NO.</b>
High Rider	805-007	552600	2405360
Low Rider	----	2453769	----

Impact 740 and 1040 come with 517 HEA and 1/4" x 50' hose.

Impact 1040T comes with RX-Apex, SC-6+ 427 & 531, splatter nozzle, 1/4" x 6' whip hose and 3/8" x 50' airless hose

## Features:

### Severe Service™ 900 Pump

- Cylinder and piston rod are tempered with a proprietary heat-treating process that increases pump life 150% over competitive pumps
- Self-adjusting packings prevent over-tightening and help prevent wear

### Speeflo® HydraDrive™

Smooth, slow-stroking hydraulic drive provides extreme power and reliability

### Accurate Pressure Control

- Adjust operating pressure from 400 to 3300 psi and spray low viscosity primers to heavy-bodied finish paints
- For even more power, the PowrTwin 12000 Plus provides an operating pressure up to 3600 psi

### Long Life & Durable

Longest stroking portable sprayer in the market

### Convertible

Easy, tool-free convertibility for projects where gas engines are not permitted  
Optional convertor kits sold separately

### Belt Guard

Pivotal housing provides easy access for belt replacement and power source conversion

### Heavy-Duty Frame

Durable cart with telescoping handle and convenient lift handles



## HYDRAULIC PISTON SPRAYERS

Since their introduction almost half a century ago, PowrTwin hydraulic piston sprayers have a well-earned reputation for durability and dependability among serious contractors for large-scale residential, commercial and industrial applications. Each sprayer supports multi-gun usage and quickly converts between electric and gas power.



PowrTwin 8900 Plus

POWERED by  
**HONDA**

SPECIFICATIONS	ELECTRIC POWERED		GAS POWERED			
	PowrTwin 6900 Plus	PowrTwin 8900 Plus	PowrTwin 4900 Plus	PowrTwin 6900 Plus	PowrTwin 8900 Plus	PowrTwin 12000 Plus
Max Delivery	1.25 gpm	1.25 gpm	1.50 gpm	2.25 gpm	2.50 gpm	3.15 gpm
Max Operating Pressure	3300 psi	3300 psi	3300 psi	3300 psi	3300 psi	3600 psi
Max Tip Size (1-Gun)	0.033"	0.034"	0.044"	0.050"	0.054"	0.058"
Max Tip Size (2-Guns)	0.023"	0.024"	0.031"	0.035"	0.038"	0.040"
Max Tip Size (3-Guns)	0.019"	0.020"	0.025"	0.029"	0.032"	0.034"
Max Tip Size (4-Guns)	---	---	---	0.025"	0.028"	0.030"
Power Source	2 hp, TEFC DC motor	2 hp, TEFC DC motor	Honda GX160	Honda GX160	Honda GX200	Honda GX270
Gun Included	RX-Pro	RX-Pro	RX-Pro	RX-Pro	RX-Pro	RX-Apex, non-filtered
Part Number	290028	290027	290012	290013	290018	290016

All configurations come with a 517 HEA Tip and 1/4" x 50' airless hose.

# POWRTWIN DI SERIES

With multi-gun support and an efficient direct immersion siphon system capable of spraying very heavy coatings like drywall compound and elastomerics, these are the most powerful portable sprayers on the market today.



 PowrTwin  
12000 Plus DI

POWERED by  
**HONDA™**

## Features:

### Direct Immersion

Submersed foot valve siphons heavy viscosity coatings

### Multiple Spray Guns

With an industry-leading 3.15 gpm, the 12000 Plus DI supports up to 6 spray guns

### Easy to Convert

Tool-free ability to quickly swap between a gas engine and an electric motor

**Note:** *Optional ConvertoKits sold separately.*

### Belt Guard

Pivotable housing provides easy access for belt replacement and power source conversion




### EZ Swing Frame

Minimizes spillage during paint changes and facilitates convenient transportation

# POWRBEAST® SERIES

These heavy-duty, direct immersion hydraulic piston sprayers are the preferred choice for serious contractors, who need more power and durability for large-scale jobs.



 PowrBeast  
9700

POWERED by  
**HONDA™**

## Features:

### HydraStroke® Technology

- ▶ Unmatched durability and performance powered by electronically-controlled hydraulics
- ▶ Unlike clutch units that small tips can damage, PowrBeast has the versatility to spray heavy and light-bodied coatings easily
- ▶ Hydraulic motor is optimized with one moving part, reducing heat and extending life

### Severe Service™ Fluid Section

- ▶ Slow-stroking piston maximizes power and durability
- ▶ Proven Titan self-adjusting packing technology extends time between repacks
- ▶ Field serviceable with easy to remove/replace fluid section

### Intelligent Design

- ▶ Extremely efficient cooling system
- ▶ Large 12" pneumatic tires increase portability and make traveling over rough surfaces easier
- ▶ Simplified pump assembly for easier service

SPECIFICATIONS	ELECTRIC POWERED	GAS POWERED	
	PowrTwin 6900 Plus DI	PowrTwin 6900 Plus DI	PowrTwin 12000 Plus DI
Max Delivery	1.25 gpm	2.25 gpm	3.15 gpm
Max Operating Pressure	3300 psi	3300 psi	3600 psi
Max Tip Size (1-Gun)	0.033"	0.050"	0.058"
Max Tip Size (2-Guns)	0.023"	0.035"	0.040"
Max Tip Size (3-Guns)	0.019"	0.029"	0.034"
Max Tip Size (4-Guns)	---	0.025"	0.030"
Power Source	2 hp, TEFC DC motor	Honda GX160	Honda GX270
Gun Included	RX-Apex, non-filtered	RX-Apex, non-filtered	RX-Apex, non-filtered
Part Number	290029	290021	290023

All configurations come with a 517 Tip and 3/8" x 50' airless hose

SPECIFICATIONS	PowrBeast 9700
Max. Delivery	3.00 gpm
Max. Operating Pressure	3300 psi
Max. Tip Size (1-Gun)	0.055"
Max. Tip Size (2-Guns)	0.039"
Max. Tip Size (3-Guns)	0.031"
Max. Tip Size (4-Guns)	0.027"
Max. Tip Size (5-Guns)	0.023"
Power Source	Honda GX270
Gun Included	RX-Pro
Part Number	537007

All configurations come with a 517 Tip and 1/4" x 50' airless hose.

# ELITE® SERIES

## Features:

### PermaStroke Technology™

- ▶ No piston or packings, cylinder or clutch to wear or burn out
- ▶ Delivers top performance at pressures from 300 to 3300 psi and when using small or large tip sizes
- ▶ Eliminates deadband – delivering a consistent fan pattern optimizing finish quality

### Field Serviceable

Cartridge-style inlet and outlet valves can be changed in less than 5 minutes

### FlatLine Pulsation Dampener™ (Available on Elite 3500)

- ▶ Eliminates all pressure fluctuations in the system
- ▶ Provides smooth operation and a consistent finish

### Sureflo™ Pusher Valve

Makes system priming easy

### Mechanical Pressure Control

Simple, durable and reliable with no electronics

Titan Elite sealed hydraulic paint sprayers help you produce the highest quality results no matter what the jobsite conditions are. Featuring the revolutionary PermaStroke Technology™, which has no pistons, packings, cylinders or clutch to replace and backed by the WearGuard® Elite Lifetime Fluid Pump Warranty, they are simple to operate and field serviceable, keeping contractors on the job.



Elite 2000



Elite 3000 High Rider



Elite 3500 High Rider



Elite 3500 72V High Rider

	Elite 2000	Elite 3000	Elite 3500	Elite 3500 72V	Elite 5500
<b>SPECIFICATIONS</b>					
Max Delivery	0.47 gpm	0.60 gpm	0.75 gpm	0.75 gpm	1.25 gpm
Max Tip Size - 1 Gun	0.021"	0.025"	0.027"	0.027"	0.036"
Max Tip Size - 2 Gun	---	---	---	---	0.023"
Max Operating Pressure	3000 psi	3300 psi	3300 psi	3300 psi	3300 psi
Power Source	1.0 hp DCX	1.2 hp DCX	Honda® GX120	Honda® eGX 72 Volt	Honda® GX120
Gun Included	RX-80	RX-Pro	RX-Pro	RX-Pro	RX-Pro
<b>CONFIGURATIONS</b>					
	<b>PART NO.</b>	<b>PART NO.</b>	<b>PART NO.</b>	<b>PART NO.</b>	<b>PART NO.</b>
Skid	2437317	---	---	---	---
High Rider	---	2402333	0537012A	<b>One Battery</b> 2471428B1  <b>Two Batteries</b> 2471428B2	2468740
Low Rider	---	---	0537013A	---	2468739

Each Elite model comes with a 517 HEA Tip and 1/4" x 50' airless hose.

# HYDRA X™ SERIES

## DIRECT IMMERSION HYDRAULIC SPRAYERS

The Hydra X Series from Titan maximizes your efficiency on the jobsite with a Direct Immersion System, which means no transfer pumps, flexible siphon tubes, or air compressors are needed. It features limit-sensing hydraulics for better control, interchangeable fluid sections, and the AutoLift™ system that raises and lowers the fluid section with the push of a button. When the job calls for the toughest coatings, the Hydra X delivers more.

### Features:

#### HydraStroke® Technology

- Unmatched durability and performance powered by electronically controlled hydraulics
- Unlike clutch units that small tips can damage, the Hydra X has the versatility to spray heavy and light bodied coatings with ease
- Hydraulic motor is optimized with one moving part, reducing heat and extending life

#### Severe Service™ Fluid Section

- 5" long slow piston stroke maximizes power and efficiency to extend the pump life
- Uses a tri-chrome process to create the industry's most durable fluid section with packings designed specifically for aggressive coatings
- Proven Titan self-adjusting packing technology with over 45 years in the field extends time between repacks
- New, patent pending, quick removal fluid section allows one person to service on the jobsite with ease

#### Smart Design

- One sprayer with modular fluid sections allowing for two different performance levels out of one sprayer
- Large 12" pneumatic tires make it easy to move around jobsite



#### AutoLift™ System

- Effortless changeover for 55 gallon drums or 5 gallon pails
- Raise and lower the fluid section & hydraulic motor pump with the touch of a button

#### Extremely Efficient Cooling System

- Two cooling fans maximize air flow over hydraulic system
- Large 6 gallon hydraulic fluid reservoir

POWERED by  
**HONDA**™



Hydra X 7230

### Hydra X 4540

High-production unit for all architectural coatings, dry wall mud, epoxies, mastics and elastomeric roof coatings

**Use if you're primarily spraying:** acrylic elastomeric roof coatings, asphalt emulsion, zinc coatings, or commercial architectural coatings

### Hydra X 7230

Powerful high pressure sprayer for hard to atomize materials like silicone and epoxies

**Use if you're primarily spraying:** silicone, epoxy, or elastomeric

	Hydra X 4540	Hydra X 7230
SPECIFICATIONS		
Max. Delivery	4.0 gpm (15.1 lpm)	3.0 gpm (11.4 lpm)
Max Tip Size (1-Gun)	0.067"	0.057"
Max Tip Size (2-Guns)	0.043"	0.035"
Max Tip Size (3-Guns)	0.035"	0.031"
Max Tip Size (4-Guns)	0.031"	0.027"
Max Tip Size (5-Guns)	0.025"	0.021"
Max Tip Size (6-Guns)	0.021"	----
Max. Operating Pressure	4500 psi	7250 psi
Cycles Per Gallon	15	23
Volumetric Flow per Double Stroke	247 cc	162 cc
CONFIGURATIONS		
49 States, Honda	2412275	2412277
California, Honda	2412275X	2412277X
Kohler Engine <sup>1</sup>	2412275K	2412277K
49 States, Honda, 250' GHT <sup>2</sup>	2424560	2424561
California, Honda, 250' GHT <sup>2</sup>	2424560X	2424561X
Kohler 250' GHT <sup>1</sup>	2424560K	2424561K

<sup>1</sup> Compliant with California Air Resources Board [CARB] rules at time of printing.

<sup>2</sup> Configurations comes with 250' Hose, M-8 Gun, 531 High Pressure Tip.

## IMPACT X™ 120 18V

Step up to industry-exclusive portability, flexibility, and comfort with the Impact X 120 18V. Optimized for HEA use and featuring three operational configurations so you're ready to go no matter what the job calls for.



Powered by **BOSCH**



### Features:

#### Cut The Cord

Lightweight and powerful AMPShare by Bosch battery for fatigue-free operation

#### Optimized for HEA and Fine Finish Tips

1600 Max psi delivers first-rate low pressure and fine finishing airless performance

#### Smart Design

- Operate in Backpack, Stationary, and Side-Carry for whatever the jobsite demands
- 1.25 gallon hopper

	Impact X 120 18V
SPECIFICATIONS	
Max. Delivery	0.31 gpm
Max. Operating Pressure	1600 psi
Max. Tip Size (1-Gun)	HEA .017"
Batteries Included	2 – 18V 4Ah AMPShare by Bosch Batteries 1 – Battery Charger
Hopper Capacity	1.25 gal
Hose Length	9'
Gun Included	RX-80 2-finger w/517 HEA & 312 Fine Finish Tip
Part Number	2441253A

## FLEXSPRAY® PRO 18V

The next generation of handheld sprayer from Titan, FlexSpray Pro 18V cuts the cord to give you more freedom. AMPShare™ by Bosch® 4Ah batteries keep you working all day on a single battery system that interchanges across multiple Titan sprayers while still delivering the power of airless and the control of HVLP into one versatile sprayer.



Powered by **BOSCH**



### Features:

#### Cut The Cord

Lightweight and powerful Bosch battery for fatigue-free operation

#### JetForce Technology®

Delivers control of a 4-stage HVLP and production of airless 413 Tip

#### Smart Design

Quick change system for front end swaps with a twist

	FlexSpray Pro 18V
SPECIFICATIONS	
Max. Operating Pressure	4.0 psi
Batteries Included	2 – 18V 4Ah AMPShare by Bosch Batteries 1 – Battery Charger
Front Ends Included	FineFinish & FlexFinish®
Part Number	2443773B

# CAPSPRAY™ SERIES

## HVLP SPRAYERS

High-end woodworking, cabinetry and furniture finishing projects require the high transfer efficiency that only Titan Capspray can deliver. These lightweight, portable, high-viscosity, low-pressure sprayers will apply all fine finishes with speed and precision – maximizing both productivity and profit.

### Features:

#### Powerful Atomization

Legendary power delivers the finest atomization for a superior finish

#### High Transfer Efficiency

Ranges up to 90%

#### Dual Air Filtration

Available on 95, 105 and 115 models

An automotive type air filter on the atomizing air side

#### Pre-filter

On both atomizing air and cooling air sides

#### Built-In Toolbox

For needles, nozzles, air caps and nozzle wrench

#### Built-In Cup Holder

Also serves as docking station for Transfer Pump accessory

#### Dirty Filter Warning Light

Extend the life of your turbine and maintain maximum performance with clean filters



■ Capspray 115 with  
Maxum Elite Gun

	Capspray 75	Capspray 95	Capspray 105	Capspray 115
SPECIFICATIONS				
Air Pressure	7.5 psi	9.5 psi	10.5 psi	11.5 psi
Turbine	3-Stage Tangential	4-Stage Tangential	5-Stage Tangential	6-Stage Tangential
Hose Length	25'	30'	30' and 5' Whip	30' and 5' Whip
Weight	20.5 lbs	21.0 lbs	22.0 lbs	23.0 lbs
Needle Nozzle Set (Additional)	----	----	#4	#4, #5
CONFIGURATIONS	PART NO.	PART NO.	PART NO.	PART NO.
With Maxum II Gun	524031	524032	----	----
With Maxum Elite Gun	----	----	524033	524034*

\*Includes Gravity Cup Accessory.

## Features:

### High Production Fine Finishing

### All Architectural Coatings

From clears to finish-quality latex.

### Zero Pressure Fluctuation

## ED 655 Plus

A compact, lightweight system that's easy to use, easy to transport, and dependable. For fine finish projects and the contractors who tackle them, we designed the Titan ED 655 Plus.

## AirCoat™

The speed and power of an airless sprayer combined with the precise control and transfer efficiency of an HVLP sprayer in a single, incredibly efficient application system – the Titan AirCoat™ Air-Assisted Airless Sprayer enables you to apply coatings in an air-assisted mode to deliver ultra-fine atomization and higher transfer efficiency. Switch to airless mode to apply a broad range of interior and exterior coatings with the production speed you expect from Titan.

## MultiFinish™ 440

The MultiFinish 440 is designed as a high production fine finish air-assisted airless system built on the legendary Titan 440 airless sprayer platform offering two systems in one. It sprays all coatings with little or no reduction.

	AIRLESS	AIR ASSISTED AIRLESS	
	ED 655 Plus	AirCoat	MultiFinish 440
<b>SPECIFICATIONS</b>			
Max. Delivery	0.35 gpm	0.35 gpm	0.54 gpm
Max. Tip Size (1-Gun)	0.017"	0.017"	0.023"
Max. Fluid Pressure	2800 psi	2800 psi	3300 psi
Max. Air Pressure	----	35 psi	35 psi
Weight	27 lbs	56 lbs	90 lbs
Fluid/Air Hose Length	50' with 3' Whip	50' with 5' Whip	50'
Spray Gun	RX-80™	GM3600	GM3600
Pump Motor	1/2 hp TEFC	1/2 hp TEFC	7/8 hp PMDC
Part Number	508090	0508074A	524029



## ACCESSORIES:

### GM 3600 Pro Gun with Reversible Tip Guard 2404548

This design offers ergonomic comfort and a reversible tip system without sacrificing finish quality. Comes with a push-in filter and works with all standard reversible airless and fine finish tips.

### GM 3600 Pro Gun with Flat Tip Guard 2412194

Includes a 9/20 flat tip.

### Airless & Air Hose 50-Foot Set 524333



# POWRCOAT™ SERIES

## Features:

### Premium is Standard

#### Minimal Maintenance

Titan's proven severe-duty fluid section with self-adjusting packings keeps you working in the most demanding of jobsites

#### Anti-icing Motor

Ensures continuous operation in all environments

#### Power to Handle Any Job

The PowrCoat series pressure ranges from 3000 to 7200 psi

#### Flow

Outputs from one to four gallons per minute

#### Self-adjusting

No packing nut to adjust

### Severe Service™ Fluid Section is Standard

- Severe-service paint pumps and high-efficiency air motors are standard on all models

- PowrCoat piston is engineered to provide unmatched chemical and solvent resistance while creating an ultra-smooth surface that operates with a smooth stroke, minimizing friction and wear

- Tungsten carbide valve seats provide maximum life and smooth, efficient operation with hardened stainless steel check balls

### AirCare™ System

- Complete FRL (Filter, Regulator, Lubricator) standard for optimal durability with every PowrCoat
- Automatic draining moisture trap
- Easy access air filter and lubrication reservoir

Models for virtually any application, including architectural, finishing, industrial maintenance, corrosion control, roofing, waterproofing and marine protective coatings.



	PowrCoat 730	PowrCoat 745	PowrCoat 940	PowrCoat 960	PowrCoat 1045	PowrCoat 1064	PowrCoat 1072
<b>SPECIFICATIONS</b>							
Air Motor Diameter	7"	7"	9"	9"	10"	10"	10"
Ratio	30:1	45:1	40:1	60:1	45:1	64:1	72:1
Stroke Length	4"	4"	4"	4"	4.75"	4.75"	4.75"
Fluid Output per Cycle	182cc	114cc	182cc	114cc	254cc	188cc	167cc
Max. Recommended Output	4.0 gpm	2.8 gpm	4.0 gpm	2.8 gpm	4.0 gpm	3.0 gpm	2.7 gpm
Max. Recommended Vol. Requirements	98 cfm	102 cfm	116 cfm	128 cfm	172 cfm	171 cfm	173 cfm
Max. Air Input Pressure	100 psi	100 psi	100 psi	100 psi	100 psi	100 psi	100 psi
Max. Operating Pressure	3000 psi	4500 psi	4000 psi	6000 psi	4500 psi	6400 psi	7200 psi
<b>CONFIGURATIONS</b>							
	<b>PART NO.</b>	<b>PART NO.</b>	<b>PART NO.</b>	<b>PART NO.</b>	<b>PART NO.</b>	<b>PART NO.</b>	<b>PART NO.</b>
Cart (bare)	0533730C	0533745C	0533940C	0533960C	05331045C	05331064C	05331072C

# POWRLINER™ SERIES

## Features:

### Large 16" Pneumatic Tires

Increases portability and makes traveling over rough surfaces easier

### Swing Back Frame Design

Increases operator leverage and reduces fatigue

### Electric Engine Start

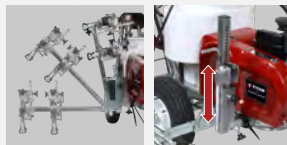
Quick and convenient way to start projects  
(Models 6955 and 8955 only)



### DeadLock Handlebars™

Infinitely adjustable in 3 planes

Available on PowrLiner 4955, 6955, and 8955 units.



SmartArm Pivot System

SmartArm Lift System

### SmartArm™

Pivots and lifts, making line adjustments and transportation quick and easy

Available on PowrLiner 4955, 6955, and 8955 units.



### PowrCenter™ Dashboard

Convenient access to user controls, tip holder, and cup holder.

Designs vary by model

Engineered and built with technology to deliver best-in-class, sharp and consistent line quality on a variety of surfaces including concrete, parking lots, and athletic fields.



PowrLiner 3500



PowrLiner 850



PowrLiner 8955

	PowrLiner 850	PowrLiner 3500	PowrLiner 3500S	PowrLiner 3500 72V	PowrLiner 5500	PowrLiner 4955	PowrLiner 6955	PowrLiner 8955
<b>SPECIFICATIONS</b>								
Max Delivery	0.33 gpm	0.75 gpm	0.75 gpm	0.75 gpm	1.25 gpm	1.25 gpm	2.10 gpm	2.50 gpm
Max Operating Pressure	3000 psi	3300 psi	3300 psi	3300 psi	3300 psi	3300 psi	3300 psi	3300 psi
Max Tip Size (1-Gun)	0.021"	0.027"	0.027"	0.027"	0.036"	0.034"	0.047"	0.054"
Max Tip Size (2-Guns)	---	---	---	---	0.025"	0.025"	0.031"	0.038"
Power Source	37.7cc 4-stroke (Gas)	Honda GX120 (Gas)	Honda GX120 (Gas)	Honda eGX (72 Volt Battery)	Honda GX160 (Gas)	Honda GX120 (Gas)	Honda GX160 (Gas)	Honda GX200 (Gas)
Pump Drive	Clutch Driven	Clutchless Sealed Hydraulic	Clutchless Sealed Hydraulic	Clutchless Sealed Hydraulic	Clutchless Sealed Hydraulic	Hydraulic	Hydraulic	Hydraulic
Part Number	0290005A	0537015A	2417440A	2445730B	2468737	0290052H	0290053H	0290054H

## LazyLiner Series Specifications

	LAZYLINER PRO	LAZYLINER ELITE
<b>DESCRIPTION</b>		
Gas Engine	Honda GX160	Honda GX200
Start	Pull	Electric
Forward Speed	0 - 12 mph (0 - 19 kph)	0 - 12 mph (0 - 19 kph)
Reverse Speed	0 - 7 mph (0 - 11 kph)	0 - 7 mph (0 - 11 kph)
Bumper / Engine Protection Bar	Optional: Part No. 2423493	Included
100W Lamp Coil Charging System	No	Yes <sup>1</sup>
Part Number	0290041H	0290040H

<sup>1</sup> Allows additional accessories (lasers, lights, etc.) to directly access on-board electrical power

- Compatible with PL2850, PL3500, PL3500S, PL4500, PL4900XLT, PL4950, PL4955, PL6900XLT, PL6950, PL6955, PL8900XLT, PL8950, PL8955

- Line Striper Hitch Kit required and sold separately

## Hitch Kits

CONFIGURATION	KIT PART NO.
PowrLiner 2850	0290043Z
PowrLiner 3500, 3500S, 4500	537935
PowrLiner 4955, 6955, 8955	2430599
PowrLiner 4950, 6950, 8950	2430599
PowrLiner 4900XLT, 6900XLT, 8900XLT	+ 0290489A (updated axle with pre-drilled thru-holes)

LazyLiner drivers are not shipped with a hitch.

# AIRLESS SPRAY GUNS

## RX-PRO<sup>®</sup>

### AIRLESS SPRAY GUN

The RX-Pro airless spray gun redefines spraying with unmatched comfort and durability including on-board tools like the built-in filter wrench that make jobsite life easier.



#### FingerPrint Grip<sup>®</sup>

Customize the grip to comfortably fit any painter's hand.



#### Ultra-light Trigger

30% lighter than the competitor's trigger pull decreasing fatigue.



#### Infinity Packing<sup>®</sup>

2X the gun life by reversing the seat and changing the ball.



#### Onboard Tools

Smart tools that make jobsite life easier.



Three Grip Sizes Available

#### RX-Pro FingerPrint Grip

Customizable to your hand size.

DESCRIPTION	PART NO.
Small	538217
Medium	538218
Large	538219

- Comes standard with both two- and four-finger triggers
- Pressure rated at 3600 psi (24.8 MPa)

DESCRIPTION	PART NO.
RX-Pro Airless Gun with HEA Tip	538020
RX-Pro Gun, Hose, 3' Whip Hose and HEA Tip Kit	538022
RX-Pro Ball Valve Repair Kit	538221

## RX-80<sup>™</sup>

### AIRLESS SPRAY GUN

The RX-80 features all-metal construction with tungsten carbide ball valve and seat for added durability. The RX-80 is available in 2- or 4-finger configuration.



#### Comfort Grip<sup>™</sup>

Ergonomic design brings added comfort.



#### Longer Life Packing Kit

Lasts longer with improved performance.



#### Onboard Tools

Smart tools that make jobsite life easier.



RX-80 Gun with Four-Finger and HEA Tip

- Comes with two- or four-finger trigger
- Pressure rated at 3600 psi (24.8 MPa)

DESCRIPTION	PART NO.
RX-80 Airless Gun, Four-Finger with HEA	538005
RX-80 Airless Gun, Two-Finger with HEA	538006
RX-80 Airless Gun, Four-Finger with SC-6+	538007
RX-80 Airless Gun, Two-Finger with SC-6+	538008
RX-80 4-Finger Gun, Hose and Tip Kit with TR1*	2454979
RX-80 4-Finger Gun, Hose and Tip w/ SC-6+*	538011
RX-80 Repair Kit	538215

\*Includes additional 3' whip hose and a 2-finger trigger.

# AIRLESS SPRAY GUNS

## RX-APEX™

### AIRLESS SPRAY GUN



#### Infinity Packing

2X the gun life by reversing the seat and changing the ball.



#### FingerPrint+ Grip™

Fully adjustable grip delivers maximum customization.



#### All-Day Trigger®

28% lighter trigger pull force and 74% less hold force.

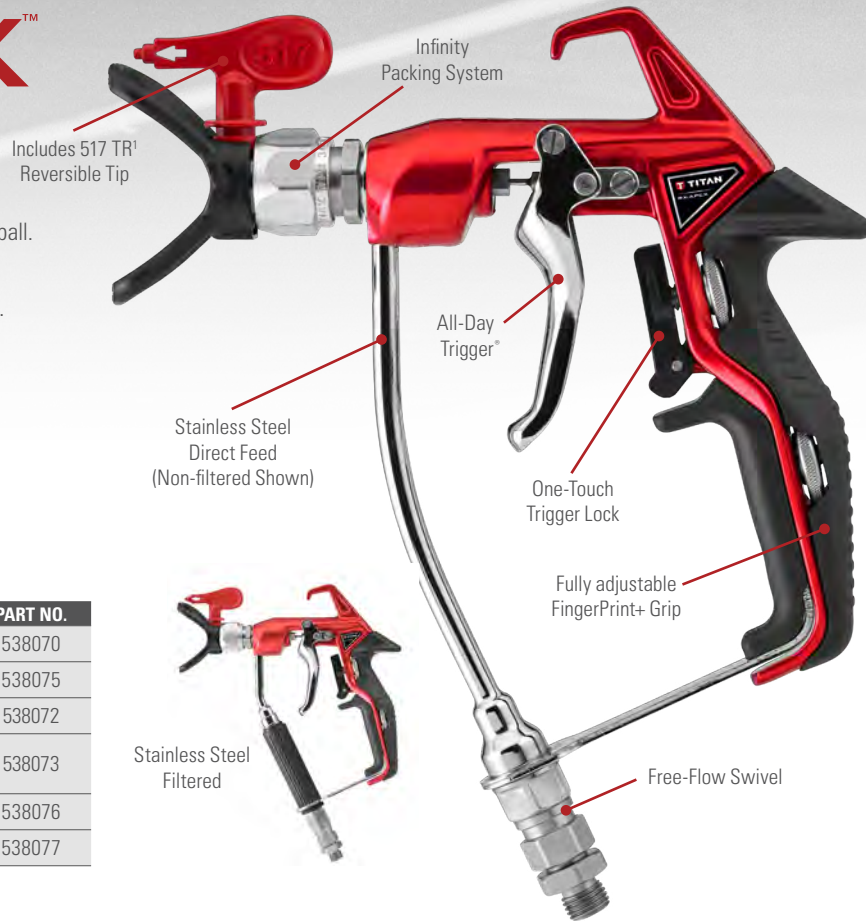


#### Free-Flow Swivel

Only direct feed airless gun with built-in swivel.

- Comes with two-finger trigger
- Pressure rated at 5000 psi (34.5 MPa)

DESCRIPTION	PART NO.
RX-Apex, Non-filtered Airless Gun with TR <sup>1</sup> Tip	538070
RX-Apex, Filtered Airless Gun with TR <sup>1</sup> Tip	538075
RX-Apex, Non-filtered Airless Gun, Hose & TR <sup>1</sup> Tip Kit	538072
RX-Apex, Non-filtered, High Pressure Airless Gun, Hose & TR <sup>1</sup> Tip Kit	538073
RX-Apex, Filtered Airless Gun, Hose & TR <sup>1</sup> Tip Kit	538076
RX-Apex, Filtered Airless Gun, Hose & SC-6+ Tip Kit	538077



## HANDLE HEAVY AND HIGH PRESSURE COATINGS WITH EASE

Titan S-Series stainless steel spray guns hold up under extreme pressure and are built for contractors that need to spray at pressures from 3900–7700 psi. The S-Series can handle corrosive coatings due to the stainless steel fluid passage. The tungsten carbide ball valve and seat ensure long life and durability.

### S-3 / S-7 Airless Gun

- In-handle filter
- Easy four-finger trigger pull
- Swivel reduces hose kinks
- S-3 is pressure rated at 3900 psi (26.9 MPa)
- S-7 is pressure rated at 7700 psi (53.1 MPa)



DESCRIPTION	PART NO.
S-3 Gun with TR <sup>1</sup> Tip	550-250
S-3 Gun, Hose and Tip Kit	550065
S-3 Repair Kit	550-275
S-7 Gun with 1/4" Swivel	550-260
S-7 Gun with 3/8" Swivel	550-270
S-7 Repair Kit	550-276

The M-Series guns are designed to handle the heaviest and harshest coatings with an unobstructed large fluid chamber and extremely durable stainless steel.

### M-4 / M-8 Mastic Guns

- Straight-line fluid passage allows maximum flow
- Angled handle for increased comfort
- Adjustable needle packing prolongs the life of critical wear parts
- Swivel allows freedom of movement without hose kinking
- Lightweight metal construction
- M-4 is pressure rated at 3600 psi (24.8 MPa)
- M-8 is pressure rated at 7700 psi (53.1 MPa)



DESCRIPTION	PART NO.
M-4 Mastic Gun with 3/8" Swivel	289013
M-8 Mastic Gun with 1/4" Swivel	289014
M-8 Mastic Gun with 3/8" Swivel	2425442
M-4/M-8 Repair Kit	2348175

# AIRLESS SPRAY TIPS

**HEA** | HIGH EFFICIENCY  
AIRLESS

## HEA REVERSIBLE TIP

- Optimized to spray all architectural paints and coatings at 1,000 psi at production speed
- Decreases overspray up to 55% allowing contractors to spray more
- Less pressure equals less stress extending pump life and extending time between repacks
- Two times the life of a standard reversible tip

### HEA Tips 330-XXX

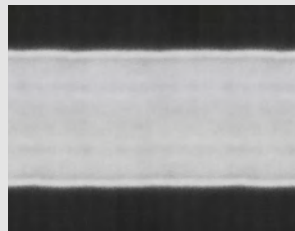
		ORIFICE SIZE (INCHES)						
FAN PATTERN WIDTH	INCHES	MM	0.011	0.013	0.015	0.017	0.019	0.021
	4-6	102-152	211	213				
	6-8	152-203	311	313				
	8-10	203-254	411	413	415	417		421
	10-12	254-305			515	517	519	521
	12-14	305-356			615	617	619	621
	Flow (gpm)	----	0.09	0.12	0.18	0.24	0.31	0.47
	Flow (lpm)	----	0.34	0.45	0.68	0.91	1.17	1.79

Maximum Working Pressure: 5000 psi (34.5 MPa)

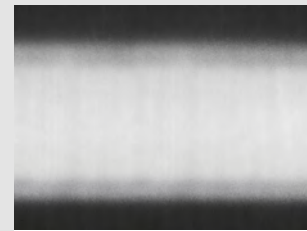


### Highly Efficient Fan Pattern

- Feathered edge provides consistent coverage
- More forgiving pattern that decreases runs and drips
- Less spray gun kickback when triggered providing more control and less overspray
- Fits all industry standard guards



Latex paint through a standard 517 tip at 1,000 psi



Latex paint through a HEA 517 tip at 1,000 psi

## Line Striping Tips 697-XXX

			ORIFICE SIZE (INCHES)							
FAN PATTERN WIDTH	INCHES	MM	0.013	0.015	0.017	0.019	0.021	0.023	0.025	0.027
	2	51		215	217	219				
	4	102	413	415	417	419	421	423		427
	6	152		615	617	619	621			
	8–10	203–254					821	823		
	Flow (gpm)	---	0.18	0.24	0.31	0.39	0.47	0.57	0.67	0.78
	Flow (lpm)	---	0.68	0.91	1.17	1.47	1.78	2.15	2.53	2.95

Maximum Working Pressure: 5000 psi (34.5 MPa)



## High Pressure Tips 696-XXX

			ORIFICE SIZE (INCHES)														
FAN PATTERN WIDTH	INCHES	MM	0.011	0.013	0.015	0.017	0.019	0.021	0.023	0.025	0.027	0.031	0.035	0.037	0.039	0.043	
	4–6	102–152	211	213													
	6–8	152–203			315	317	319	321	323	325							
	8–10	203–254			415	417	419										
	10–12	254–305			515	517	519	521	523	525	527	531	535	537		543	
	12–14	305–356									627						
	14–16	356–406						721									
	16–18	406–457											835		839		
	18–20	457–508								923							
	Flow (gpm)	---	0.13	0.18	0.24	0.31	0.39	0.47	0.57	0.67	0.78	1.03	1.32	1.40	1.64	1.99	
Flow (lpm)	---	0.45	0.68	0.91	1.17	1.47	1.78	2.15	2.53	2.95	3.89	4.99	5.29	6.20	7.52		

Maximum Working Pressure: 7700 psi (53.1 MPa)




# HIGH QUALITY SC-6+ REVERSIBLE TIP

- The industry's longest-lasting orifice
- Up to 22% wider fan pattern
- Fits all Titan and most industry standard guards


## TITAN TIPS PAINT MORE

### Titan Tips Vs. the Competition

Long-lasting orifice gives you more usable tip life, spraying a consistent film thickness and wasting less paint.



100 Gallons sprayed with a Titan SC-6+ tip\*



100 Gallons sprayed with the competitor's standard tip\*

\*Assumes consistent application method

## SC-6+ Tips 662-XXX

			ORIFICE WIDTH (INCHES)													
FAN PATTERN WIDTH	INCHES	MM	0.007	0.009	0.011	0.013	0.015	0.017	0.019	0.021	0.023	0.025	0.027	0.029	0.031	0.035
	4–6	102–152	207	209	211	213	215	217	219							
	6–8	152–203		309	311	313	315	317	319	321		325				
	8–10	203–254		409	411	413	415	417	419	421						
	10–12	254–305			511	513	515	517	519	521	523	525			531	535
	12–14	305–356		609	611	613	615	617	619	621	623	625	627	629	631	635
	Flow (gpm)	---	0.05	0.09	0.13	0.18	0.24	0.31	0.39	0.47	0.57	0.67	0.78	0.91	1.03	1.32
	Flow (lpm)	---	0.19	0.34	0.45	0.68	0.91	1.17	1.47	1.78	2.15	2.53	2.95	3.44	3.89	4.99

Maximum Working Pressure: 5000 psi (34.5 MPa)



## SC-6+ Fine Finishing Tips 671-XXX

		ORIFICE SIZE (INCHES)				
FAN PATTERN WIDTH	INCHES	MM	0.008	0.010	0.012	0.014
	4-6	102-152	208	210	212	214
	6-8	152-203	308	310	312	314
	8-10	203-254	408	410	412	414
	10-12	254-305		510	512	514
	12-14	305-356			612	
	Flow (gpm)	---	0.07	0.11	0.16	0.21
	Flow (lpm)	---	0.26	0.42	0.60	0.79

Maximum Working Pressure: 5000 psi (34.5 MPa)

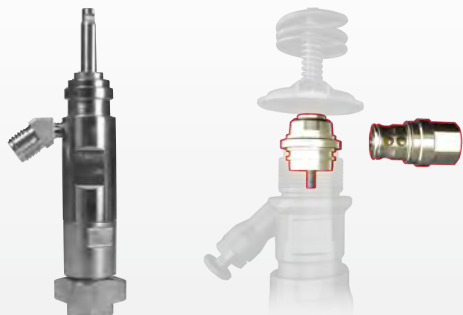


Flow rates are calculated at 2000 psi with water.





## WEARGUARD CONVENIENCE PROGRAM KEEPS YOU UP AND RUNNING



When you purchase a new Titan sprayer, you're able to take advantage of our exclusive WearGuard Convenience Program. Protect your investment by purchasing a spare fluid section or PermaStroke kit at a discounted rate. Save yourself the time and frustration of an extra trip or waiting for parts to arrive in the event that your sprayer goes down. When you have a backup fluid section or PermaStroke kit on hand, replacement can quickly be made without leaving the jobsite and doesn't require special tools. The bottom line is that WearGuard keeps you up and running.

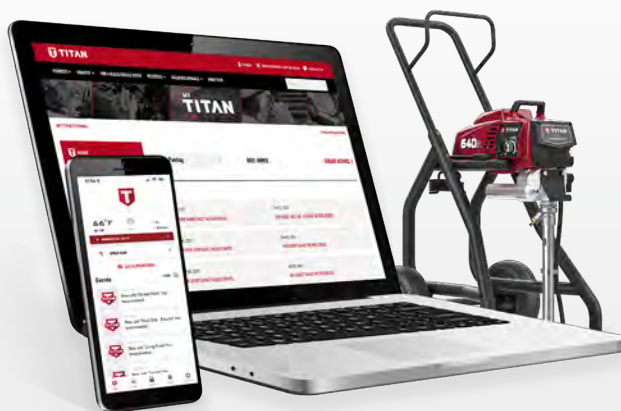
Not interested in purchasing a spare fluid section? We also offer the option of a free packing kit on select sprayers.

**For more information  
on pricing and how to  
order, go to:**

**[www.titanwearguard.com](http://www.titanwearguard.com)  
or scan the QR code.**



## KEEP TITAN WITH YOU WHEREVER YOU GO



MyTitan™ gives you immediate access to all things Titan. Anywhere, anytime on your computer or mobile device. MyTitan gives you everything you need to get the most out of your sprayers, all in one place, no matter where the workday takes you. MyTitan is designed to make your life easier, your business more efficient, and your day more productive—so you can stay ahead of the game, do more in less time, and never lose track of another detail.

**For more information on  
this new app, go to:**

**[www.titantool.com/  
mytitan-welcome](http://www.titantool.com/mytitan-welcome)  
or scan the QR code.**



**THOR**  
TITAN HUB FOR ONLINE REDEMPTION

## ONLINE REWARD REDEMPTION NO CLIPPING. NO STAMPS. NO HASSLES.

**For more information and to see current promotions, go to:  
[www.titantool.com/thor-promos](http://www.titantool.com/thor-promos) or scan the QR code.**



All information contained in this brochure is based on the latest information available at the time of printing. Titan reserves the right to make changes at any time, without notice. Due to continuous innovation, specifications may progressively change. Contact one of our dependable sales reps or call our dedicated customer service team for more information.